

Notices to Mariners

Edition No. 10/2025
October 31, 2025



Safety First, Service Always

Monthly Eastern Edition

Notices to Mariners – Monthly Eastern Edition
Edition No. 10/2025

Aussi disponible en français :
Avis aux navigateurs – Édition mensuelle de l'Est
Édition n° 10/2025

Published under the Authority of:

Canadian Coast Guard Programs
Aids to Navigation and Waterways
Montreal, QC H2Y 2E7

For more information, contact DFO.Notmar-Notmar.MPO@dfo-mpo.gc.ca.

© His Majesty the King in Right of Canada,
as represented by the Canadian Coast Guard, 2025.

Cat. No. Fs152-8E-PDF (Electronic PDF, English)
ISSN 2817-0075

Cat. No. Fs152-8F-PDF (Electronic PDF, French)
ISSN 2817-0083

A web version is available here:

[Notices to Mariners – Monthly Editions](#) (English)

[Avis aux navigateurs – Publications mensuelles](#) (French)

Explanatory Notes – Notices to Mariners (NOTMAR)

Geographical positions refer directly to the graduations of the largest scale Canadian Hydrographic Service chart (unless otherwise indicated).

Bearings refer to the true compass and are measured clockwise from 000° (North) clockwise to 359°; those relating to lights are from seaward.

Visibility of lights is that in clear weather.

Depths - The units used for soundings (metres, fathoms or feet) are stated in the title of each chart.

Elevations are normally given above Higher High Water, Large Tide (unless otherwise indicated).

Distances may be calculated as follows:

- 1 nautical mile = 1,852 metres (6,076.1 feet)
- 1 statute mile = 1,609.3 metres (5,280 feet)
- 1 metre = 3.28 feet

Temporary and Preliminary Notices to Mariners – Section 1A of *Notices to Mariners*

These notices are indicated by a (T) or a (P), respectively. Please note that nautical charts are not amended by the Canadian Hydrographic Service for temporary (T) and preliminary (P) notices. It is recommended that mariners chart these corrections in pencil. For the list of charts affected by (T) & (P) notices, please refer to the current [Notices to Mariners - Monthly Summary of Temporary and Preliminary Notices](#) publication.

Suggestions and Corrections Form

This form is specifically for suggestions and corrections to Notices to Mariners publications. It is available [online](#) and also in [fillable PDF format](#) included with the monthly publication ZIP file.

To submit comments and suggestions on possible improvements to the various publications and services: DFO.Notmar-Notmar.MPO@dfo-mpo.gc.ca.

To report chart discrepancies and/or corrections to the *Canadian Sailing Directions* booklets: Fill out the [Marine Information Reporting Form](#) and/or email chsinfo@dfo-mpo.gc.ca.

To report emergencies or navigational hazards: [Contact your nearest MCTS centre](#)

- VHF channel 16 (156.8 MHz)
- MF/HF frequency 2182 kHz/4125 kHz (where available)
- *16 on a cellphone (where available)

NOTMAR Website – Monthly Editions, Chart Corrections and Chart Patches

The NOTMAR website allows users to access the [monthly publications](#), [chart corrections](#), and [chart patches](#).

Users can subscribe for free to the [email notification service](#) to receive notifications when charts of interest are updated, including their patches, as well as when a new Monthly Edition of *Notices to Mariners* is published.

In addition, the monthly publication and related files to download, such as chart patches, can be obtained all together through the download of a single ZIP file.

Explanatory Notes – Canadian Hydrographic Service (CHS)

Chart Corrections – Section 2 of *Notices to Mariners*

Corrections to nautical charts will be listed in numerical order by chart number. Each chart correction listed applies only to that particular chart. Related charts, if any, will have their own specific correction listed separately.

Users should also refer to CHS *Chart 1: Symbols, Abbreviations and Terms* for additional information pertaining to the correction of charts.

The illustration below describes the elements that will comprise a typical Section 2 chart correction:

| | | | | | |
|---------------------------------------|--------------|---|-------------------------------|-------------------------------------|-------------------|
| | Chart Number | Chart Title | Chart latest new edition date | Horizontal Chart Datum | Last Correction |
| Weekly Chart Correction Date | 1312 | Lac Saint-Pierre - New Edition - 10-MAY-2019 - NAD 1983 | | | |
| | 05-AUG-2022 | | | | LN/D. 24-SEP-2021 |
| | Amend | | | 46°03'32.4"N 073°03'21.6"W | |
| | | (See Chart 1 P16) | | (Q2022035) LL(2177) DFO(6410690-01) | |
| | Chart Action | Chart 1 Reference No. | CCG Reference No. | List of Lights No. | CHS Reference No. |

The last correction number is identified with the **LN/D** or **Last Notice to Mariners Number / Date**.

Mariners are advised that only the most critical changes that directly affect safety to navigation are issued in "Section 2 – Chart Corrections." This limitation is required to ensure that charts remain as clear and easy to read as possible. As a result, mariners may see minor discrepancies of a non-critical nature between information in official publications. For example, a small change in the nominal range or focal height of a light may not result in the production of a chart correction in *Notices to Mariners*, but may result in a correction in the [List of Lights, Buoys and Fog Signals](#) publication.

Note: In the case of a discrepancy between information provided on CHS charts relating to aids to navigation, and the *List of Lights, Buoys and Fog Signals* publication, the latter shall be deemed as containing the most up-to-date information.

Explanatory Notes – Marine Communications and Traffic Services (MCTS)

Navigational Warnings / Notices to Shipping

The Canadian Coast Guard (CCG) is implementing a number of changes to the aids to navigation system in Canada.

These changes are advertised as Navigational Warnings, formerly called Notices to Shipping¹, that are broadcast by the CCG, and are then followed up with Notices to Mariners, then charts are updated by hand correction, reprints or new editions.

Mariners are advised that all relevant Navigational Warnings (NAVWARN) should be kept until superseded by Notices to Mariners or through revised charts issued by the Canadian Hydrographic Service (CHS).

NAVWARN are accessible on the applicable regional page on the [CCG Navigational Warnings](#).

CHS is reviewing the impact of these changes with CCG and together are preparing an action plan on the issuing of chart revisions.

For further information, contact your regional NAVWARN Issuing Desk.

| | |
|--|---|
| Atlantic Region (North) *Port aux Basques MCTS Centre “N” Series NAVWARN Canadian Coast Guard 49 Stadium Rd. P.O. Box 99 Port aux Basques, NL A0M 1C0 Telephone: 709-695-2168 or 1-800-563-9089 Facsimile: 709-695-7784 Email: NAVWARN.MCTSPortAuxBasques@innav.gc.ca | Central Region *Prescott MCTS Centre “C” Series NAVWARN Canadian Coast Guard 401 King Street West P.O. Box 1000 Prescott, ON K0E 1T0 Telephone: 613-925-0666 Facsimile: 613-925-4519 Email: NAVWARN.MCTSPrescott@innav.gc.ca |
| Atlantic Region (South) *Sydney MCTS Centre “M” Series NAVWARN Canadian Coast Guard 1190 Westmount Road Sydney, NS B1R 2J6 Telephone: 902-564-7751 or 1-800-686-8676 Facsimile: 902-564-7662 Email: NAVWARN.MCTSSydney@innav.gc.ca | Arctic Region *Iqaluit MCTS Centre <i>Operational from approximately mid-May until late December.</i> “A” Series NAVWARN Canadian Coast Guard P.O. Box 189 Iqaluit, NU X0A 0H0 Telephone: 867-979-5269 Facsimile: 867-979-4264 Email: NAVWARN.MCTSIqaluit@innav.gc.ca |

*Service available in English and in French.

¹ The expression “Notice to Shipping” was changed to “Navigational Warning” in January 2019.

Table of Contents

| | |
|--|-----------|
| Section 1: General and Safety Information | 1 |
| *505/23 Canadian Hydrographic Service – Magnetic Declination Calculations | 1 |
| *1207/23 Canadian Hydrographic Service – Inappropriate Geographical Names Review Process | 1 |
| *405/25 Saguenay–St. Lawrence Marine Park - Beluga Whale Protection: Slowdown Area at the Mouth of the Saguenay Fjord and Area Closure at Baie Sainte-Marguerite | 1 |
| *406/25 Saguenay–St. Lawrence Marine Park and Surrounding Waters – Whale Protection | 4 |
| *601/25 Protecting the North Atlantic Right Whale: Speed Restriction Measures in the Gulf of St. Lawrence | 5 |
| *1001/25 Pilot Project – Guidelines for the Transit of Container Vessels up to 310 metres in Length x 40 metres in Beam – Québec–Montréal Segment | 14 |
| *1002/25 Canadian Hydrographic Service – Nautical Charts | 16 |
| *1003/25 Canadian Hydrographic Service – Electronic Navigational Charts | 17 |
| *1004/25 Canadian Hydrographic Service – Raster Digital Charts (BSB V3) | 18 |
| *1005/25 Transport Canada - Ship Safety Bulletins #23/2024 and #14/2025 | 18 |
| *1006/25 Pointe des Monts aux/to Escoumins – Daybeacon Permanently Discontinued | 18 |
| *1007/25 Little Current to/à Clapperton Island – Unlit Buoy Repositioned | 18 |
| *1008/25 Saint John Harbour and Approaches / et les approches – Unlit Buoy Permanently Discontinued | 19 |
| *1009/25 Plans - Île D'Anticosti – Daybeacon Permanently Discontinued | 19 |
| *1010/25 Hillsborough Bay – Unlit Buoys Permanently Discontinued | 19 |
| Section 1A: Temporary and Preliminary Notices | 20 |
| Reminder – Comment Period for Active Preliminary Notices | 20 |
| *1011(T)/25 Plans-Péninsule de la Gaspésie – Marine Works | 20 |
| *1012(T)/25 Approaches to / Approches à Bay of Fundy / Baie de Fundy – Obstruction: Scientific Moorings | 21 |
| *1013/25 Cap des Rosiers à/to Chandler – Obstruction Charted | 21 |
| *1014(T)/25 Kingston Harbour and Approaches/et les approches – Obstruction: New docks | 21 |
| *1015(T)/25 Georgian Bay / Baie Georgienne – Obstruction: Scientific and Subsurface Moorings .. | 22 |
| *1016/25 Port of Thunder Bay – Survey Results Charted | 22 |
| Section 2: Chart Corrections | 23 |
| Section 3: Radio Aids to Marine Navigation Corrections | 38 |
| No corrections for this section. | 38 |

| | |
|---|-----------|
| Section 4: Canadian Sailing Directions Corrections | 39 |
|---|-----------|

| | |
|---|-----------|
| Section 5: List of Lights, Buoys and Fog Signals Corrections | 40 |
|---|-----------|

Numerical Index of Canadian Charts Affected

This numerical index lists all nautical charts mentioned in this monthly edition of Notices to Mariners. Only charts appearing in Section 2 of this publication require a chart correction. The appearance of charts in all other sections, particularly those related to the correction of other nautical publications, is included here for reference.

| Chart No. | Pages | Chart No. | Pages | Chart No. | Pages |
|-----------|--------------------------------|-----------|------------------------|-----------|------------------------|
| 1203 | 20 | 4117 | 19, 40 | 8005 | 21 |
| 1223 | 23 | 4233 | 29 | 8006 | 21 |
| 1230 | 20 | 4255 | 21 | 8048 | 36 |
| 1234 | 41 | 4281 | 29 | 8049 | 36, 37 |
| 1236 | 18, 23, 24 | 4320 | 29 | | |
| 1310 | 24 | 4321 | 29 | | |
| 1311 | 41, 42 | 4335 | 30 | | |
| 1312 | 24 | 4374 | 40 | | |
| 1314 | 41 | 4386 | 30 | | |
| 1320 | 24, 25, 41 | 4405 | 30 | | |
| 1350 | 25, 26 | 4430 | 19 | | |
| 2011 | 20 | 4464 | 30 | | |
| 2016 | 26 | 4466 | 19, 30 | | |
| 2017 | 21 | 4467 | 40 | | |
| 2019 | 26, 27, 42, 43 | 4485 | 21 | | |
| 2060 | 27 | 4909 | 30, 41 | | |
| 2077 | 27, 28 | 4921 | 20 | | |
| 2123 | 28 | 4940 | 31, 32 | | |
| 2201 | 22 | 5001 | 32, 33 | | |
| 2202 | 28 | 5316 | 33 | | |
| 2207 | 18 | 5450 | 33 | | |
| 2261 | 22 | 5625 | 33 | | |
| 2282 | 22 | 5626 | 34 | | |
| 2291 | 22 | 6201 | 34 | | |
| 2307 | 43 | 6211 | 34 | | |
| 2314 | 22 | 6215 | 34 | | |
| 3625 | 16 | 6249 | 43 | | |
| 4001 | 28 | 7502 | 34 | | |
| 4011 | 21 | 7521 | 34, 35 | | |
| 4013 | 29 | 7573 | 35 | | |
| 4022 | 29 | 7575 | 35 | | |
| 4023 | 29 | 7578 | 35 | | |
| 4115 | 40 | 7621 | 35 | | |
| 4116 | 29 | 7950 | 36 | | |

Section 1: General and Safety Information

***505/23 Canadian Hydrographic Service – Magnetic Declination Calculations**

(Recurrent publication of notice *505/23, originally published in the *Notices to Mariners – Monthly Eastern Edition* 05/2023 publication.)

Mariners are advised that CHS has adopted the harmonized World Magnetic Model (WMM), as found on the NCEI/NOAA website. Old compass rose declination information on CHS navigational products can be updated using this website: <https://www.ngdc.noaa.gov/geomag/calculators/magcalc.shtml#declination>. While the differences in the model declinations are small each year, they can become more significant over a large period of time.

***1207/23 Canadian Hydrographic Service – Inappropriate Geographical Names Review Process**

(Recurrent publication of notice *1207/23, originally published in the *Notices to Mariners – Monthly Eastern Edition* 12/2023 publication.)

The records of the Canadian Hydrographic Service could contain geographical names that may be considered inappropriate, offensive and derogatory. Geographical naming authorities are in the process of addressing many offensive place names, the review process is underway. For more information, about inappropriate geographical names, please see the [following announcement](#).

***405/25 Saguenay–St. Lawrence Marine Park - Beluga Whale Protection: Slowdown Area at the Mouth of the Saguenay Fjord and Area Closure at Baie Sainte-Marguerite**

(Recurrent publication of notice *405/25, originally published in the *Notices to Mariners – Monthly Eastern Edition* 04/2025 publication.)

The Saguenay–St. Lawrence Marine Park and its surrounding area are at the heart of endangered beluga whale critical summer habitat. Marine mammal protection measures have been put in place in accordance with the *Marine Activities in the Saguenay–St. Lawrence Marine Park Regulations* within the limits of the Marine Park.

However, important feeding, calving and rearing areas for beluga whales require greater protection to ensure the recovery of the species. The portion of the Saguenay situated between the mouth of the Fjord and Baie Sainte-Marguerite is one of the areas most used by females and their young from May to October. The mouth of the Saguenay is known as a feeding ground and Baie Sainte-Marguerite as a calving and rearing area.

In order to prevent collisions with beluga whales, a compulsory 15-knot slowdown area is in effect from May 1st to October 31st at the mouth of the Saguenay. To ensure tranquility for female belugas and their young during the critical calving period, access to Baie Sainte-Marguerite is prohibited to all vessels from June 21st to September 21st, except for special authorizations (see description below).

For safety reasons, the slowdown area measure at the mouth of the Saguenay Fjord does not apply to cargo ships (see the monthly edition of Notice to Mariners from May to October for voluntary protection measures in the St. Lawrence Estuary). An enhanced vigilance is, however, recommended to all navigators between the mouth of the Saguenay Fjord and Baie Sainte-Marguerite for the protection of beluga whales.

For more information on the Saguenay–St. Lawrence Marine Park, see notice 5C of the *Notices to Mariners Annual Edition 2025* or visit the [Saguenay-St. Lawrence Marine Park website](#).

REGULATORY PROTECTION MEASURES — BELUGA WHALE

Entire Marine Park Territory:

- When beluga whales are less than half a nautical mile (926 metres) from a motorized vessel, the vessel must maintain a steady speed of between 5 and 10 knots.
- All vessels, including human-powered vessels (kayaks and canoes), must continue to move forward and maintain their heading.
- All vessels must maintain a minimum distance of 400 metres from beluga whales at all times.

For more information concerning the regulations, consult the [“Navigate” section of the Saguenay-St. Lawrence Marine Park website](#).

Mouth of the Saguenay Fjord (Figure 1) — Slowdown Area (area crosshatched in red):

- Maximum speed at the mouth of the Saguenay between buoys S7 and S8 and the ferry docks between Baie-Sainte-Catherine and Tadoussac is 15 knots from May 1st to October 31st.

Baie Sainte-Marguerite (Figure 2) — Area Closure (red area):

- From June 21st to September 21st, vessels must not enter the red area, which follows a line between Cap Nord-Ouest and Cap Sainte-Marguerite.
- Special authorizations are granted only for kayaks, canoes and recreational fishermen who must travel without stopping along a corridor within 10 metres of the shore or in shallow areas.

VOLUNTARY PROTECTION MEASURES

Baie Sainte-Marguerite sector (Figure 2) — Transit Area (area crosshatched in yellow):

- From June 21st to September 21st, navigation in this area is recommended at a speed of between 5 and 10 knots without stopping.

The purpose of this transit area is to favour respect of the *Marine Activities in the Saguenay–St. Lawrence Marine Park Regulations*, since beluga whales are often present in the Baie Sainte-Marguerite sector.

Information

All incidents, including collisions with whales, must be reported without delay by calling 1-866-508-9888. For any other situation concerning a marine mammal that is either dead or in trouble, contact the Marine Mammal Emergency Response Network at 1-877-722-5346, or use VHF channel 16.

Figure 1

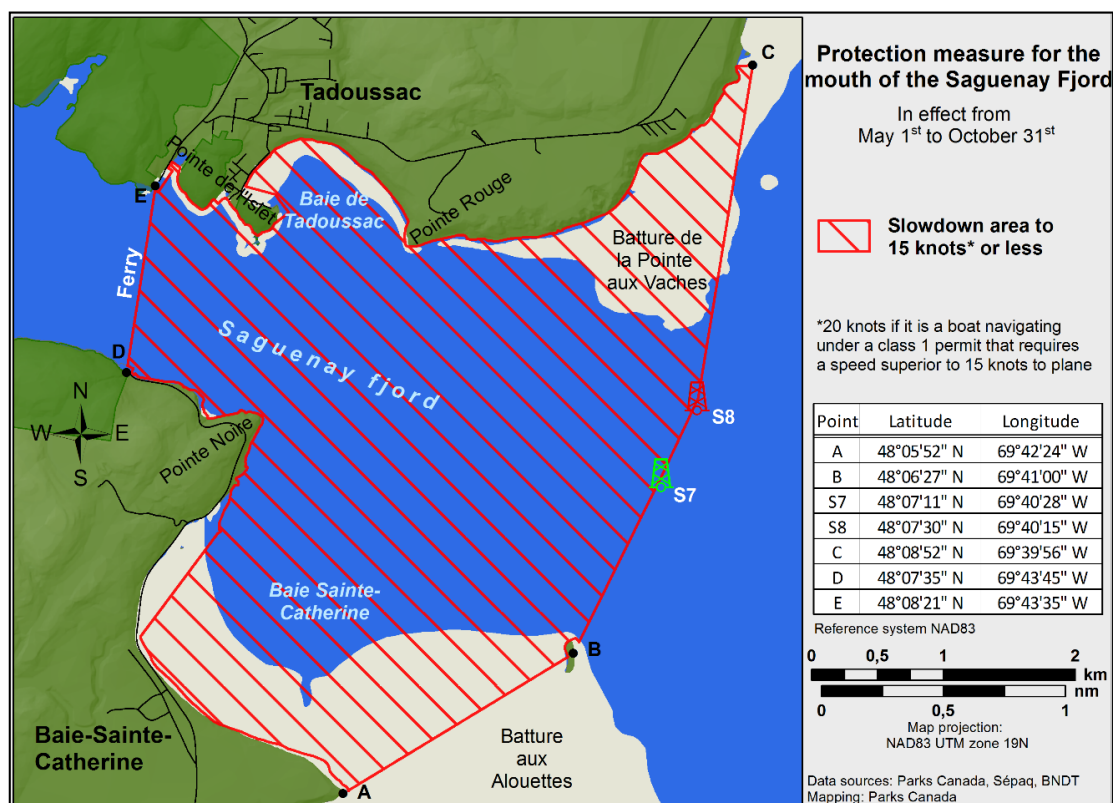
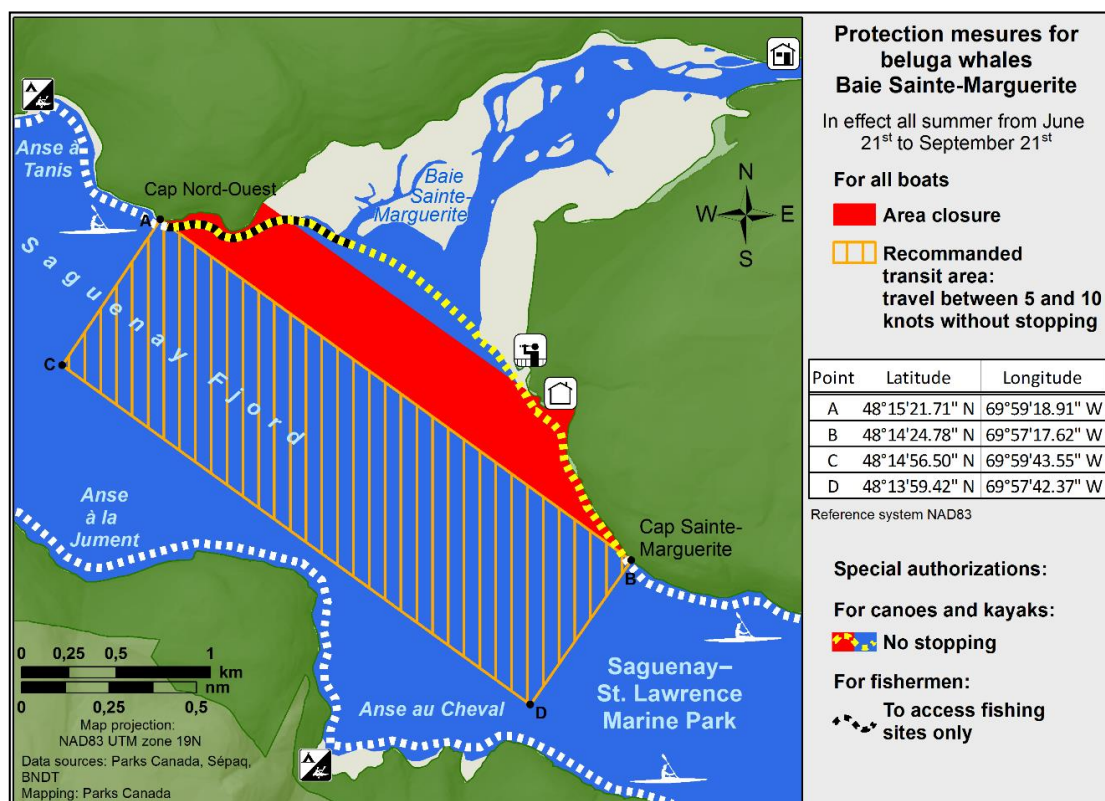


Figure 2



***406/25 Saguenay–St. Lawrence Marine Park and Surrounding Waters – Whale Protection**

(Recurrent publication of notice *406/25, originally published in the *Notices to Mariners – Monthly Eastern Edition* 04/2025 publication.)

The waters in and around the Saguenay–St. Lawrence Marine Park are well known for the resident endangered beluga population and the wide diversity of whales that migrate there to feed, particularly between April and November.

REGULATORY PROTECTION MEASURES

All whale species that are found in the St. Lawrence are protected under the *Marine Mammal Regulations*, pursuant to the *Fisheries Act*. Within the boundaries of the Marine Park, specific measures are set out in the *Marine Activities in the Saguenay–St. Lawrence Marine Park Regulations*, pursuant to the establishment of the *Saguenay–St. Lawrence Marine Park Act*. Any collision with a marine mammal within the Marine Park must immediately be reported to a park warden at 1-866-508-9888. For collisions that occur outside the Marine Park or for any situation involving a marine mammal that is dead or in trouble, contact the emergency network at 1-877-722-5346 or on VHF channel 16.

For more information on the Saguenay–St. Lawrence Marine Park, see notice 5C of the *Notices to Mariners Annual Edition 2025*.

VOLUNTARY PROTECTION MEASURES

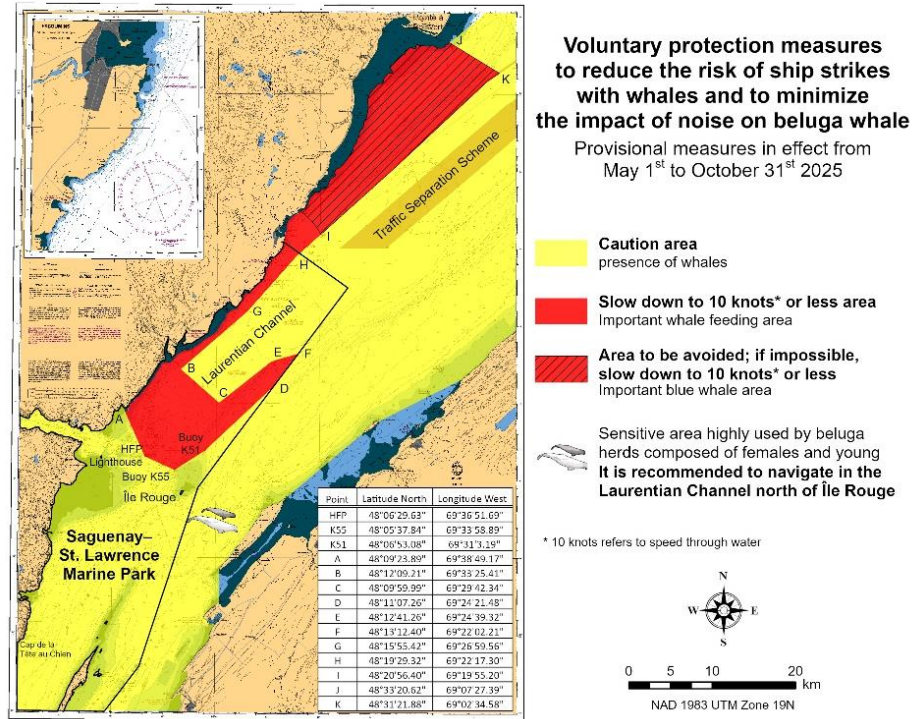
Provisional measures in effect from May 1 to October 31, 2025. See map at the end of this notice.

These measures apply to merchant vessels and cruise ships between Pointe à Boisvert and Cap de la Tête au Chien to prevent collisions with whales. These measures should only be taken when they will not jeopardize navigational safety.

Caution area (yellow area): To reduce the risk of collisions with whales that can be present anywhere in this area, heightened vigilance of navigators is critical. Posting a lookout is recommended in order to increase the chances of seeing the whales and thus taking necessary measures to avoid them. If bypassing the whales is not possible, slow down and wait for the animals to move away to a distance greater than 400 metres (0.215 nautical miles) before resuming original speed. It is more difficult to see the animals at night therefore increased caution is recommended.

Slow down to 10 knots or less area (red area): To reduce the risk of collisions with whales in this feeding area, it is recommended that vessels slow down to a maximum speed through the water of 10 knots and post a lookout. It is further recommended to remain in the Laurentian Channel to the north of Île Rouge to minimize the impact of noise in a sensitive area south of this island, which is highly frequented by herds of beluga whales composed of females and young.

Area to be avoided (hatched red area): To reduce noise and the risk of collisions with whales, vessels should avoid transiting through this area which is highly frequented by blue whales, an endangered species. If the area cannot be avoided, slow down to a speed through the water of 10 knots or less.



*601/25 Protecting the North Atlantic Right Whale: Speed Restriction Measures in the Gulf of St. Lawrence

(Recurrent publication of notice *601/25, originally published in the *Notices to Mariners – Monthly Eastern Edition* 06/2025 publication.)

Reference: Notice 501/25 is cancelled

Purpose

This notice describes the speed and navigational restriction zones that vessels must follow in the Gulf of St. Lawrence.

The Government of Canada has established these zones to reduce the risk of vessel colliding with North Atlantic right whales (NARW).

Background

Due to changing migration patterns of North Atlantic right whales and their increased presence in the Gulf of St. Lawrence, the Government of Canada has set seasonal speed restrictions in specific zones. These speed restrictions zones are defined as “static zones”, “dynamic shipping zones”, “seasonal management areas”, a “voluntary seasonal slowdown zone” and a “restricted area”. [See the map below for details.](#)

Note: Vessels **must follow** Navigational Warnings outlining the speed restrictions. The *Interim Order No.3 for the Protection of North Atlantic Right Whales (Eubalaena Glacialis) in the Gulf of St. Lawrence, 2025* enables the issuance of Navigational Warnings (NAVWARNs) imposing speed restrictions and navigation restrictions.

Speed restriction zones are described in monthly Notices to Mariners (NOTMARs), which are published by the Canadian Coast Guard. The status of these zones is broadcasted through NAVWARNs, which are published by the Coast Guard’s Marine Communications and Traffic Services Centres.

CHANGES TO SPEED RESTRICTION ZONES AND MEASURES

Based on consultations with industry and on scientific data, changes to the speed restriction zones are effective since April 16th, 2025, while the restricted area will be implemented based on whale presence.

A voluntary seasonal slowdown of 10.0 knots over the ground spanning from Cabot Strait (a line running from Cape North NS to Cape Ray NL) to the eastern edge of dynamic shipping zone E will be implemented at the beginning and end of the North Atlantic right whale season (Spring and fall).

Please check the latest NAVWARN for all speed restrictions currently in effect.

SPEED RESTRICTION MEASURES FOR 2025

These restrictions are in effect from **April 16 to November 15, 2025**.

Note: This is the third interim order for the 2025 North Atlantic Right Whale (NARW) season, which started on April 16th, during the 2025 federal election period. The first was signed for a 30-day period, to provide protection for the species, while meeting Caretaker Convention requirements. The second Interim Order extended the protective measures for 30 days to provide continuity while Cabinet is formed. The third interim order was signed to cover the remaining of the NARW season until November 15th, 2025.

Exceptions

The following exception will apply to **all** measures:

- a) a vessel in distress or providing assistance to a person or a vessel in distress;
- b) a government vessel being used:
 - i) for law enforcement activities;
 - ii) for search and rescue operations; or
 - iii) to ensure the competency of the crew or the operational readiness of the vessel or crew with respect to such activities or operations.

STATIC ZONES

In the static zones, **all** vessels above **13 m** in length overall (LOA) must proceed at a speed of not more than 10.0 knots over the ground.

Exclusions

Air cushion vessels operated by or on behalf of the Government of Canada that are engaged in ice-clearing activities from April to June in and around Chaleur Bay are exempted when in operation.

36.57 m (20-fathom) shallow water protocol exclusion

Vessels engaged in any commercial fishing activity may proceed at a safe operational speed in waters not more than 36.57 m (20 fathom) deep within the static zones.

If a notice to fish harvesters and a NAVWARN state that at least one North Atlantic right whale has been detected in waters within a static zone or its associated buffer zone that are not more than 36.57m deep, the speed limit of 10.0 knot over the ground will apply in the concerned zone(s) to all vessels above 13m in length overall (LOA). The speed restriction will be in effect for 15 days after the day on which the whale was detected. The buffer zones associated with the static zones are located 5 miles north and south of their adjacent border in waters less than 36.57m deep.

Coordinates for the northern static zone:

- 50° 20' N 065° 00' W
- 49° 13' N 065° 00' W
- 48° 40' N 064° 13' W
- 48° 40' N 062° 40' W
- 48° 03' N 061° 07.5' W
- 47° 58.1' N 061° 03.5' W
- 48° 00' N 061° 00' W
- 49° 04' N 061° 00' W
- 49° 04' N 062° 00' W
- 49° 43' N 063° 00' W
- 50° 20' N 063° 00' W

Coordinates for the southern static zone:

- 48° 40' N 065° 00' W
- 48° 40' N 062° 40' W
- 48° 03' N 061° 07.5' W
- 47° 58.1' N 061° 03.5' W
- 47° 10' N 062° 30' W
- 47° 10' N 065° 00' W

DYNAMIC SHIPPING ZONES

There are five dynamic shipping zones (DSZ) located in the routing systems north and south of Anticosti Island: A, B, C, D and E

Coordinates for the dynamic shipping zones:

Zone A

- 49° 41' N, 065° 00' W
- 49° 20' N, 065° 00' W
- 49° 11' N, 064° 00' W
- 49° 22' N, 064° 00' W

Zone B

- 49° 22' N, 064° 00' W
- 49° 11' N, 064° 00' W
- 48° 48' N, 063° 00' W
- 49° 00' N, 063° 00' W

Zone C

- 49° 00' N, 063° 00' W
- 48° 48' N, 063° 00' W
- 48° 24' N, 062° 00' W
- 48° 35' N, 062° 00' W

Zone D

- 50° 16' N, 064° 00' W
- 50° 00' N, 064° 00' W
- 49° 56' N, 063° 00' W
- 50° 16' N, 063° 00' W

Zone E

- 48° 35' N 062° 00' W
- 48° 24' N 062° 00' W
- 48° 03' N 061° 07.5' W
- 47° 58.1' N 061° 03.5' W
- 48° 00' N 061° 00' W
- 48° 10.5' N 061° 00' W

When a North Atlantic right whale is detected in a dynamic shipping zone or in the buffer zones, located 5 nautical miles south or 2.5 nautical miles from the eastern and western edges of the dynamic shipping zones:

- All vessels will be notified via a NAVWARN; and
- Vessels above **13 m** in length overall (LOA) must proceed at a speed of not more than 10.0 knots over the ground within that zone.

Even though dynamic shipping zones overlap with static zones, vessels can travel at a safe operational speed in dynamic shipping zones when they are not under speed restriction. Mariners must also keep in mind that North Atlantic right whales may be nearby.

SPEED RESTRICTIONS IN THE DYNAMIC SHIPPING ZONES

The detection of North Atlantic right whales in one or more dynamic shipping zone(s), or in their buffer zones, will trigger a speed restriction in the concerned zone(s). The speed restriction in the dynamic shipping zone(s) will be in effect for 15 days from the date of detection. In the event of a new North Atlantic right whale detection occurring in the last 7 days of the 15-day slowdown period, the speed restriction will be extended for an additional 15 days from the date of the new detection. This would continue until no NARW are detected.

When a NAVWARN is issued implementing a speed restriction in one or more dynamic shipping zone(s), vessels above **13 m** in length (LOA) must not exceed a speed of 10.0 knots over the ground. Within any dynamic zone that is not subject to a speed restriction, mariners may proceed at a safe operational speed. Mariners are encouraged to take into consideration the potential for their vessel striking North Atlantic right whales when considering a “safe operational speed” during navigation.

SEASONAL MANAGEMENT AREAS

Seasonal management area 1 (SMA-1) and seasonal management area 2 (SMA-2) are speed restriction areas located north and south of dynamic shipping zone E, respectively.

Within seasonal management areas, vessels above **13 m** in length (LOA):

- must restrict their speed so as not to exceed 10.0 knots over the ground from April 16th to June 24th, 2025; **and**
- are allowed to proceed at a safe operational speed from June 25th to November 15th, 2025, unless a North Atlantic right whale is detected. If a whale is detected, a speed restriction of 10.0 knots over the ground will be triggered for 15 days from the date of detection. In the event of a new North Atlantic right whale detection occurring in the last 7 days of the 15-day slowdown period, the speed restriction will be extended for an additional 15 days from the date of the new detection. This would continue until no North Atlantic right whales are detected.

Coordinates for the SMA-1:

- 49° 04' N 062° 00' W
- 49° 04' N 061° 00' W
- 48° 10.5' N 061° 00' W
- 48° 35' N 062° 00' W

Coordinates for the SMA-2:

- 48° 24' N 062° 00' W
- 48° 03' N 061° 07.5' W
- 47° 58.1' N 061° 03.5' W
- 47° 26.69' N 062° 00' W

RESTRICTED AREA

In the summer months, an important proportion of the total North Atlantic right whale population gathers for feeding and surface activity near the [Shediac Valley](#). Since this makes the North Atlantic right whale more susceptible to vessel collisions, a mandatory restricted area will be implemented in and near the Shediac Valley and will come into force once 80% of the restricted area is closed to fishing for the season as per the [Department of Fisheries and Oceans' right whale closure protocol](#) or at the latest on June 16th, 2025. The restricted area will be lifted on September 26, 2025, unless North Atlantic right whale detections are reported in high number, which would extend the restricted area beyond September 26.

The size and location of the area are determined based on historical detection data of North Atlantic right whales. All necessary details can be found in the *Interim Order No.3 for the Protection of North Atlantic Right Whales (Eubalaena Glacialis) in the Gulf of St. Lawrence, 2025*. Triggering and lifting of the restricted area will be communicated to mariners through NAVWARNs and notices to fish harvesters.

Vessels above **13 m** in length (LOA) will be required to:

- avoid the area unless they are part of the exceptions listed in the *Interim Order No.3 for the Protection of North Atlantic Right Whales (Eubalaena Glacialis) in the Gulf of St. Lawrence, 2025*;
- transit the area at a speed not exceeding 8.0 knots over the ground if they are part of the exceptions.

The following exceptions will apply to the restricted area. The following listed vessels can travel through the area at not more than 8.0 knots over the ground:

- A vessel being used for commercial fishing;
- A vessel being used for fishing under the authority of a licence issued under the *Aboriginal Communal Fishing Licences Regulations*;
- A vessel being used for research purposes on behalf of the Government of Canada
- A vessel being used as part of the Department of Fisheries and Oceans' Marine Mammal Response Program to assist a marine mammal or sea turtle in distress or to access or retrieve a deceased marine mammal or sea turtle;
- A vessel authorized by the Government of Canada to retrieve or identify the location of abandoned or lost fishing gear;
- A vessel involved in pollution response operations;
- A vessel avoiding immediate or unforeseen danger;
- A vessel involved in research relating to right whales as part of a project that has received funding from the Government of Canada.

The following vessels can travel through the restricted area at a speed over 8.0 knots, but below 10.0 knots over the ground as required by the static speed restriction zone:

- A vessel being used by an employee of the Government of Canada or peace officer who is performing their duties.

Coordinates for the restricted area:

- 48°31.8' N 063°39.6' W
- 48°24.72' N 063°17.88' W
- 47°18.84' N 064°10.8' W
- 47°27.18' N 064°30.72' W

Inclement weather exception

Mariners will be notified in advance via a NAVWARN should the speed restriction status change in any zone or area, due to inclement weather.

Within any zone or area that is no longer subject to a speed restriction due to adverse weather conditions, mariners may proceed at a safe operational speed. Mariners are however encouraged to take into consideration the potential for their vessel striking North Atlantic right whales when considering a "safe operational speed" during navigation.

*Non-excepted vessels are still prohibited from transiting through the restricted area.

VOLUNTARY SEASONAL SLOWDOWN IN CABOT STRAIT

To coincide with the North Atlantic right whales entering and exiting the Gulf of St. Lawrence in large numbers, a voluntary seasonal slowdown is being put in place in Cabot Strait from April 16th to June 24th, 2025, and from September 3rd to November 15th, 2025.

- During these periods, vessels above 13 m in length (LOA) are requested to voluntarily reduce their speed as to not exceed 10.0 knots over the ground.

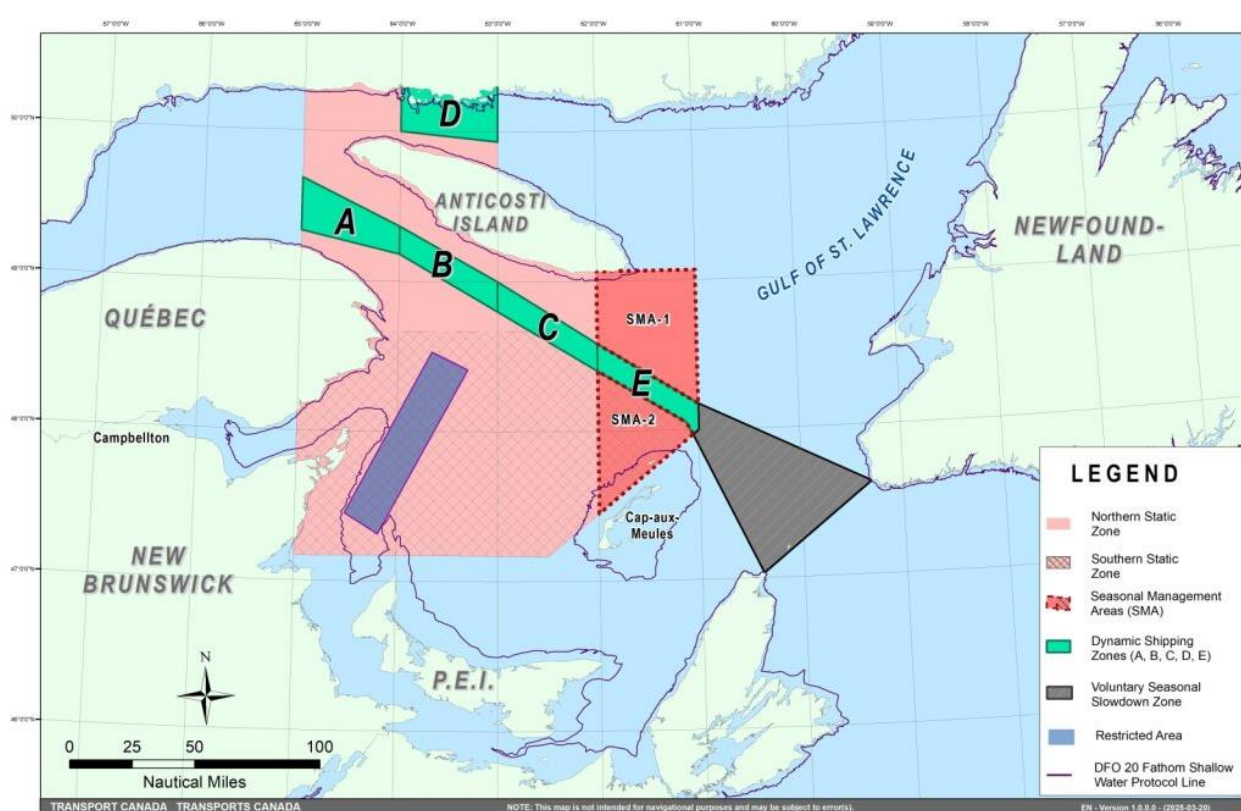
Voluntary seasonal slowdown zone coordinates:

- 48° 10.5' N 061° 00' W
- 47° 37.2' N 059° 18.5' W
- 47° 02' N 060° 23.7' W
- 47° 58.1' N 061° 03.5' W
- 48° 00' N 061° 00' W

Map of the Gulf of St. Lawrence

The following map shows

- the static zones (north and south), in pink;
- the dynamic shipping zones (A, B, C, D and E), in green;
- the seasonal management areas, in dark pink;
- the voluntary seasonal slowdown zone, in grey;
- the restricted area, in dark blue; and
- the 36.57 m (20 fathom) shallow water protocol line.



This map is for visual representation only and is not to be used for navigation or enforcement.

ROSEWAY BASIN – AREA TO BE AVOIDED

The Roseway Basin, located approximately 20 nautical miles south of Cape Sable Island, Nova Scotia, is a critical habitat for North Atlantic right whales, which have been observed to gather in the area on a seasonal basis in Canadian waters. This critical habitat is also located near key shipping routes. In 2007, Canada, with the support of many groups with varied interests, proposed to the International Maritime Organization (IMO) the establishment of a seasonal Area to be Avoided in the Roseway Basin to protect North Atlantic right whales, which IMO accepted and adopted.

To reduce the risk of vessels colliding with North Atlantic right whales, it is recommended that vessels of 300 gross tonnages and more, in transit during the period of June 1 through December 31, avoid the Roseway Basin area. Smaller vessels are also encouraged to avoid passage through this area. If passage is necessary within the Area to be Avoided, it is recommended that all mariners decrease their vessel speed to no more than 10 knots, when safe to do so.

Roseway Basin coordinates:

- 43° 16' N 064° 55' W
- 42° 47' N 064° 59' W
- 42° 39' N 065° 31' W
- 42° 52' N 066° 05' W

BAY OF FUNDY – VOLUNTARY SLOWDOWN

The Grand Manan Basin located in the Bay of Fundy is identified as a critical habitat for the North Atlantic right whale. When North Atlantic right whales are detected in the Bay of Fundy shipping lanes and near the Grand Manan Basin area, the Fundy Traffic will ask vessels to voluntarily slowdown to 10 knots via VHF channel 12 or 14 at corresponding Calling-in-Points.

NAVWARN BROADCASTS

The Canadian Coast Guard issues NAVWARNs:

- by radio broadcast; and
- online at [Canada's Maritime Information Portal](#) and its [Navigational Warnings](#) site, using the [North Atlantic Right Whale](#) category.

Mariners must ensure they have accurate and up-to-date information about the protection of the North Atlantic right whale, as in all applicable NOTMARs and NAVWARNs.

For the North Atlantic right whale speed restrictions, the NAVWARN(s) currently in effect will be provided to vessels subject to the *Vessel Traffic Services Zone Regulations* or the *Eastern Canada Vessel Traffic Services Zone Regulations*:

Outbound vessels will receive NAVWARNs

- at Calling-in-Point 10 (St-Laurent); or
- upon a departure downstream from the Quebec pilot station (including the Saguenay River, Chaleur Bay, Miramichi Bay, etc.)

Inbound vessels will receive NAVWARNs

- when a clearance to enter Canadian waters is granted

Vessels in transit will receive NAVWARNs

- at the last reporting point prior to entering the mandatory speed restriction zones; and/or
- at 10 nautical miles before they enter the mandatory speed restriction zones

For those vessels not subject to the above-mentioned regulations, vessel operators are required to monitor broadcasts by the Canadian Coast Guard's Marine Communications and Traffic Services network for the most up to date information. For marine radio frequencies and broadcast times, information may be found in the [Radio Aids to Marine Navigation](#) publication.

AIDS TO NAVIGATION

The Canadian Coast Guard broadcasts virtual Automatic Identification System (AIS) aids to navigation (AIS AtoN) in specific areas. These aids may notify mariners of dynamic shipping zones and/or seasonal management areas subject to speed restrictions.

Each zone is delimited by four to six virtual AIS AtoN, which can be displayed on a ship's navigation equipment, such as

- Electronic Chart Display and Information System (ECDIS);
- Electronic Chart System (ECS);
- RADAR;
- Minimum Keyboard Display (MKD); and
- Electronic Nautical Chart (ENC).

The Canadian Coast Guard broadcasts the virtual AIS AtoN only when a speed restriction is in effect in one or more testing zones.

Mariners must select the virtual AIS AtoN symbol to view a message such as "SectA1 Spd Lim 10 kt." This message refers to a speed restriction in effect for a specific zone.

Note: This system is not the primary method of communicating this information.

COMPLIANCE AND ENFORCEMENT

Vessels must comply with the Interim Orders made pursuant to the *Canada Shipping Act, 2001*, and any NAVWARNs broadcasted and published by the Canadian Coast Guard relating to the Interim Orders, aimed at regulating the navigation for the purposes of protecting the North Atlantic right whales.

If a vessel does not comply with the Interim Orders or instructions in the NAVWARNs related to the Interim Orders, the vessel could face:

- administrative monetary penalties up to a maximum of CAN \$250,000; and/or
- penal sanctions under the *Canada Shipping Act, 2001* is liable on summary conviction to a fine of not more than CAN \$1,000,000 or to imprisonment for a term of not more than 18 months, or to both.

If a vessel appears to have violated the speed restriction, Transport Canada Marine Safety inspectors will review all information provided through AIS and seek an explanation from the master.

No exemptions to the speed restriction will be granted in advance. However, if a deviation from the speed restrictions is necessary for safety reasons, the following information must be entered into the bridge logbook:

- reason(s) for deviation;
- speed at which vessel is operated;
- latitude and longitude at time of deviation;
- time and duration of deviation; and
- master of the vessel shall sign and date the bridge logbook entry.

For any deviation, Transport Canada will review and consider reasons such as:

- navigating to ensure vessel safety;
- weather conditions;
- force majeure (unforeseeable circumstances); and
- responding to emergencies.

REPORT A NORTH ATLANTIC RIGHT WHALE SIGHTING

If you see **live, free-swimming whales**:

- **Email:** DFO.GLFWhales-BaleinesGLF.MPO@dfo-mpo.gc.ca
- When reporting sightings of North Atlantic right whales, you must include: GPS location (latitude and longitude), date and time of sighting, number of marine mammals, **photograph(s)/video(s) collected** and if possible, behavior of marine mammals observed (ex., feeding, travelling, diving).

SIGHTINGS OF ENTANGLED, INJURED OR DEAD NORTH ATLANTIC RIGHT WHALE

If you see a North Atlantic right whale (and all other marine mammals) **entangled, injured or dead**, please document and report it immediately to the regional Response Network.

- When documenting you should collect: GPS location (latitude and longitude), date and time of sighting, number of marine mammals, photograph(s)/video(s), and description of the incident to provide to the Response Network.

Southern part of the Gulf of St. Lawrence (New Brunswick, Nova Scotia & Prince Edward Island)

Marine Animal Response Society
Telephone: 1-866-567-6277

Newfoundland and Labrador

Whale Release and Strandings Newfoundland and Labrador (Tangly Whales Inc.)
Telephone: 1-888-895-3003 or 1-709-895-3003

Québec

Réseau québécois d'urgences pour les mammifères marins (RQUMM)
Telephone: 1-877-722-5346

Report a marine mammal or sea turtle incident or sighting:

Visit the website for more information on [reporting other marine mammal or sea turtle sighting](#) and incidents.

Please consult [Whale Insight](#) for the latest right whale observations.

***1001/25 Pilot Project – Guidelines for the Transit of Container Vessels up to 310 metres in Length x 40 metres in Beam – Québec-Montréal Segment**

NOTICE

This notice sets out the conditions under which container ships, with a maximum length of 310 metres and a beam of up to 40 metres, may safely transit the St. Lawrence waterway between Québec and Montréal.

Effective Date: September 30, 2025

Duration: This pilot project remains in effect until further notice or until permanent guidelines are established.

Scope of the Pilot Project

This pilot project applies to container vessels with following dimensions:

Length Overall: Between 300.01 metres and not exceeding 310.0 metres; and,

Moulded Breadth: Equal to or greater than 32.5 metres, not exceeding 40.0 metres.

Application of Notice to Mariners 27A

Notice to Mariners 27A remains applicable, except for the following sections, which are amended or replaced by the directives specified in this pilot project:

Section 2: Meetings in Risk Areas (R)

Section 3: Overtaking in Risk Areas (D)

Section 6: Maneuverability Assessment

Note: Any changes in the status of the vessel (e.g. hull, navigational equipment, propulsion, etc.) must be reported immediately to the Escoumins Marine Communication and Traffic Services Centre (MCTS Escoumins) prior to entering pilotage area.

Should a deficiency occur, it will be analyzed and reviewed by Canadian Coast Guard, Pilotage Authority and Transport Canada to determine steps to resolve the issue. A reauthorization will be required to proceed into pilotage areas as a vessel participating in a pilot project.

Specific Guidelines – Container Ships up to 310 m x 40 m

1. Meetings and Overtaking

All meetings and overtaking are permitted in accordance with Notice 27A for all vessels, except for Wide Beam and Long vessels.

For these vessels, the authorized zones for meeting and overtaking with vessel up to 310 m x 40m will be determined by the expert committee and communicated to MCTS within 48-hours prior to the transit, based on scheduled traffic of other Wide Beam and Long vessels.

2. Transit Safety Conditions and Measures

2.1 Transits will mostly occur during daylight between Québec and Montréal, depending on weather, traffic, and other navigational risk factors.

2.1.1 During hours of darkness, in favourable conditions, passage is allowed for upbound container vessels until Grondines.

2.1.2 The “Good Manoeuvrability” (BM) classification, as defined in Sections 6 and 7 of Notice 27A, cannot be assigned to the vessels covered by this pilot project.

2.2 Minimum engine speed is required when approaching the Québec bridges and the Laviolette Bridge, provided environmental conditions allow.

2.3 Maximum speed over ground between Île-aux-Vaches and Contrecoeur is 9 knots upbound and 11 knots downbound.

2.4 During pilot changeovers at Trois-Rivières, the handover of conduct shall take place, upstream or downstream after the vessel has cleared the Laviolette Bridge, weather conditions permitting.

2.5 At least 30 minutes before passing under the Québec bridges and the Laviolette Bridge, qualified crew members must be stationed:

- In the steering gear room, ready to activate emergency steering systems; and,
- On the forecastle, ready to drop anchors.

Each station must be equipped with independent communication means with the bridge.

2.6 An operational tug with a minimum bollard pull of 40 tonnes must be assigned and available during the vessel's transit under the Laviolette Bridge. The tug must:

- Be within a 15-nautical-mile radius of the Laviolette Bridge;
- Ready to respond within one hour's notice

Passage Management Framework

1. Coordination and Follow-up Procedures

Any shipowner or agent planning a transit under this pilot project must notify the Laurentian Pilotage Authority (LPA) at transit@apl.gc.ca as soon as possible, and at least 10 days in advance.

2. Expert Committee

The expert committee responsible for monitoring this pilot project consists of representatives from:

- Canadian Coast Guard (CCG)
- Corporation of Central St. Lawrence Pilots (CPSLC)
- Laurentian Pilotage Authority (LPA)
- Montreal Port Authority (MPA)
- Transport Canada (TC)

Roles and Responsibilities:

- **Pre-transit assessment:** Hold a meeting before each transit to analyze environmental, operational, and safety conditions.
- **Transit Planning:** Coordinate vessel arrival and ensure measures are implemented.
- **Transit monitoring:** Oversee and study each transit
- **Decision-making:** Authorize or postpone passage based on observed conditions and evaluated risks.

3. Operational Flexibility

The expert committee may:

- Ease, reinforce, or modify safety measures based on weather, tides, or other risk factors.
- Place representatives on board for study and verification purposes within the pilot project.

Safety and Responsibility Clause

In applying these guidelines, it is understood that the pilot and bridge team must take into account all navigational hazards, collision risks, and special circumstances, as well as vessel limitations, which may require deviation from these measures to avoid immediate danger.

In such cases of deviation, or in any incident or situation, the pilot must inform the nearest MCTS officer.

The pilot conducting the vessel is responsible to the master for the safety navigation of the vessel.
([Section 38.01\(3\) of the Pilotage Act](#))

Pilot Project Progress

As part of this pilot project, safety measures will be continuously monitored and may be progressively adjusted by the expert committee based on:

- Operational experience acquired during transits under varied conditions;
- Results of complementary technical studies;
- Assessment of the potential impact on traffic fluidity; and,
- Recommendations made by the expert committee.

Any adjustment must be submitted to the Standing Committee on Navigational Safety (SCNS) for review and, if required, communicated through additional notices.

Reporting and Data Collection

After each voyage, pilots must submit to the expert committee a detailed report on vessel maneuverability and on meetings that occurred during the passage. MCTS will also submit a transit report.

The Laurentian Pilotage Authority will maintain a consolidated database of all transit and maneuverability reports related to this pilot project.

Contact Information

Laurentian Pilotage Authority

Phone: 514-657-2041 option 2

Email: transit@apl.gc.ca

*1002/25 Canadian Hydrographic Service – Nautical Charts

| Charts | Main Title | Scale | Edition Date | Published | Cat# | Price |
|------------------------------|---------------|-------|--------------|-----------|------|-------|
| Charts Permanently Withdrawn | | | | | | |
| 3625 | Scott Islands | | | | | |

***1003/25 Canadian Hydrographic Service – Electronic Navigational Charts**

| S-57 ENC Number | Chart Title | ENC Compilation Scale | Published |
|-------------------------------------|--|-----------------------|------------|
| New Charts | | | |
| CA541Q4A (Edn 1.000) | CA541Q4A | 1:6 000 | 2025-10-24 |
| CA541Q5A (Edn 1.000) | CA541Q5A | 1:6 000 | 2025-10-24 |
| CA542Q4A (Edn 1.000) | CA542Q4A | 1:6 000 | 2025-10-24 |
| CA54GSPA (Edn 1.000) | CA54GSPA | 1:11 000 | 2025-10-10 |
| CA54GSQA (Edn 1.000) | CA54GSQA | 1:11 000 | 2025-10-10 |
| CA55VSSA (Edn 1.000) | CA55VSSA | 1:11 000 | 2025-10-10 |
| CA571257 (Edn 1.000) | CA571257 | 1:6 000 | 2025-10-10 |
| CA58XMQA (Edn 1.000) | Port6150N07230W | 1:6 000 | 2025-10-24 |
| CA58XMRA (Edn 1.000) | Port6150N07220W | 1:6 000 | 2025-10-24 |
| CA58XMSA (Edn 1.000) | Port6150N07210W | 1:6 000 | 2025-10-24 |
| CA58XMTA (Edn 1.000) | Port6150N07200W | 1:6 000 | 2025-10-24 |
| CA58YMQA (Edn 1.000) | Port6159N07230W | 1:6 000 | 2025-10-24 |
| CA58YMRA (Edn 1.000) | Port6160N07220W | 1:6 000 | 2025-10-24 |
| CA58YMSA (Edn 1.000) | Port6160N07210W | 1:6 000 | 2025-10-24 |
| CA58YMTA (Edn 1.000) | Port6160N07200W | 1:6 000 | 2025-10-24 |
| New Editions | | | |
| CA373234 (Edn 7.000) | Scotch Bonnet Island to/à Cobourg | 1:35 000 | 2025-10-24 |
| CA373504 (Edn 3.000) | Pelly Bay | 1:62 500 | 2025-10-17 |
| CA42QJ6A (Edn 2.000) | CA42QJ6A | 1:45 000 | 2025-10-31 |
| CA431JGA (Edn 2.000) | CA431JGA | 1:45 000 | 2025-10-31 |
| CA431KDA (Edn 2.000) | CA431KDA | 1:45 000 | 2025-10-31 |
| CA448M7A (Edn 5.000) | Transit4600N07400W | 1:11 000 | 2025-10-24 |
| CA448PXA (Edn 3.000) | CA448PXA | 1:90 000 | 2025-10-17 |
| CA44JRRA (Edn 2.000) | CA44JRRA | 1:45 000 | 2025-10-17 |
| CA44US2A (Edn 2.000) | CA44US2A | 1:22 500 | 2025-10-17 |
| CA46CRFA (Edn 3.000) | CA46CRFA | 1:45 000 | 2025-10-17 |
| CA46CRRA (Edn 3.000) | CA46CRRA | 1:45 000 | 2025-10-17 |
| CA46CS2A (Edn 3.000) | CA46CS2A | 1:45 000 | 2025-10-17 |
| CA46NRRA (Edn 3.000) | CA46NRRA | 1:45 000 | 2025-10-17 |
| CA544MCA (Edn 3.000) | Port4560N07350W | 1:6 000 | 2025-10-24 |
| CA548MFA (Edn 3.000) | Port4600N07320W | 1:4 000 | 2025-10-10 |
| CA573253 (Edn 11.000) | Port of Thunder Bay | 1:10 000 | 2025-10-03 |
| Charts Permanently Withdrawn | | | |
| CA23MMTA | CA23MMTA | | |
| CA473521 | Wakeham Bay and Fisher Bay et les Approches/and Approaches | Cancelled by CA58XMQA | |
| CA573377 | Kangiqsujuaq | | |

***1004/25 Canadian Hydrographic Service – Raster Digital Charts (BSB V3)**

| Charts | Main Title | Scale | Edition Date | Published |
|-------------------------------------|---------------|-------|--------------|-----------|
| Charts Permanently Withdrawn | | | | |
| RM-3625 | Scott Islands | | | |

***1005/25 Transport Canada - Ship Safety Bulletins #23/2024 and #14/2025**

An updated and new **Ship Safety Bulletins** have recently been posted on the [Transport Canada website](#).

To view or download these bulletins, please click on the links below:

[SSB#23/2024](#) – Extension of the National trial of remote inspections for grain and concentrates in bulk (Updated)
RDIMS# 20495028

[SSB#14/2025](#) – Vessels equipped with Shaft or Engine Power Limitation Systems (ShaPoli/EPL) operating in all waters including Compulsory Pilotage Areas (CPA)

Sign up for [e-Bulletin](#) to receive an e-mail notice each time a new Ship Safety Bulletin is published on our website.

Contact us at marinesafety-securitemaritime@tc.gc.ca or 1-855-859-3123 (Toll Free).

***1006/25 Pointe des Monts aux/to Escoumins – Daybeacon Permanently Discontinued**

Reference chart: 1236

The following daybeacon has been permanently discontinued:

| Aid Name | LL # | Position |
|----------|--------|--------------------------------|
| Laval | 6736.2 | 48° 44' 59.2"N 069° 01' 52.3"W |

(Q2025-071)

***1007/25 Little Current to/à Clapperton Island – Unlit Buoy Repositioned**

Reference chart: 2207

The following unlit buoy has been repositioned to the following coordinates:

| Aid Name | LL # | Position |
|----------|------|--------------------------------|
| Buoy U13 | 8875 | 46° 07' 49.5"N 082° 16' 03.9"W |

(D2025-023)

***1008/25 Saint John Harbour and Approaches / et les approches – Unlit Buoy
Permanently Discontinued**

Reference chart: 4117

The following unlit buoy has been permanently discontinued:

| Aid Name | LL # | Position |
|---------------------|---------|--------------------------------|
| Round Reef buoy J16 | 5102.16 | 45° 15' 28.0"N 066° 03' 20.0"W |

(F2025-016)

***1009/25 Plans - Île D'Anticosti – Daybeacon Permanently Discontinued**

Reference chart: 4430

The following daybeacon has been permanently discontinued:

| Aid Name | LL # | Position |
|----------|--------|--------------------------------|
| Aigle | 6516.7 | 49° 47' 11.3"N 064° 19' 24.5"W |

(Q2025-070)

***1010/25 Hillsborough Bay – Unlit Buoys Permanently Discontinued**

Reference chart: 4466

The following unlit buoys have been permanently discontinued:

| Aid Name | LL # | Position |
|-----------------|--------|--------------------------------|
| Pownal buoy CD1 | 5989.2 | 46° 10' 21.8"N 062° 58' 02.7"W |
| Pownal buoy CD2 | 5989.3 | 46° 10' 47.3"N 062° 57' 33.1"W |
| Pownal buoy CD3 | 5989.4 | 46° 10' 51.4"N 062° 57' 33.6"W |
| Pownal buoy CD4 | 5989.5 | 46° 11' 01.1"N 062° 57' 22.2"W |
| Pownal buoy CD5 | 5989.6 | 46° 11' 05.1"N 062° 57' 29.3"W |
| Pownal buoy CD6 | 5989.7 | 46° 11' 11.5"N 062° 57' 22.2"W |

(G2025-121 to 126)

Section 1A: Temporary and Preliminary Notices

Reminder – Comment Period for Active Preliminary Notices

This is a reminder that the comment period is still open for the following active Preliminary notices:

| Notice # | Reference Chart # | Aids Affected (LL #) | Intent of Notice |
|---------------------------|-------------------|----------------------|------------------------------------|
| Atlantic Coast | | | |
| 809(P)/25 | 1203 | 1784, 1784.5 | Aids to Navigation to be Abandoned |
| 810(P)/25 | 4921 | 1392.7, 1395, 1396 | Aids to Navigation to be Abandoned |
| Inland Waters | | | |
| 816(P)/25 | 2011 | List | Buoys to be Discontinued |

Please refer to the [Notices to Mariners - Monthly Summary of Temporary and Preliminary Notices](#) publication for details.

Newfoundland and Labrador Coast

Temporary Notices

No notices applicable for this edition.

Preliminary Notices

No notices applicable for this edition.

Atlantic Coast

Temporary Notices

*1011(T)/25 Plans-Péninsule de la Gaspésie – Marine Works

Reference chart: 1230

Construction operations taking place daily from 1100 UTC until 2300 UTC since October 27th 2025 at the Rivière-au-Renard wharf (48° 59.879'N 064° 22.887'W) and breakwall (48° 59.993'N 064° 23.030'W).

(NW-C-3292-25)

***1012(T)/25 Approaches to / Approches à Bay of Fundy / Baie de Fundy – Obstruction: Scientific Moorings**

Reference chart: 4011, 4255, 8005, 8006

Multiple subsurface scientific moorings are deployed in the Fundian channel. The scientific moorings are between five to six meters off the ocean floor at the following positions:

| | |
|----------------------------|----------------------------|
| 42° 39.358'N 066° 27.843'W | 42° 29.389'N 065° 58.091'W |
| 42° 39.576'N 066° 20.535'W | 42° 29.574'N 065° 50.799'W |
| 42° 33.965'N 066° 27.544'W | 42° 23.800'N 065° 05.117'W |
| 42° 34.181'N 066° 20.247'W | 42° 23.993'N 065° 57.836'W |
| 42° 34.390'N 066° 12.948'W | 42° 24.177'N 065° 50.555'W |
| 42° 34.592'N 066° 05.648'W | 42° 24.354'N 065° 43.272'W |
| 42° 28.787'N 066° 19.959'W | 42° 18.780'N 065° 50.312'W |
| 42° 28.995'N 066° 12.671'W | 42° 18.956'N 065° 43.039'W |
| 42° 29.196'N 066° 05.382'W | 42° 13.383'N 065° 50.069'W |

(NW-M-1431-25)

***1013/25 Cap des Rosiers à/to Chandler – Obstruction Charted**

Reference: Notice 1214(T)/22 is cancelled (Chart 4485).

The sunken barge and excavator have been charted on chart 4485.

Preliminary Notices

No notices applicable for this edition.

Inland Waters

Temporary Notices

***1014(T)/25 Kingston Harbour and Approaches/et les approches – Obstruction: New docks**

Reference chart: 2017

New floating docks with lights permanently installed at the Kingston Yacht Club.

(NW-C-2930-25)

***1015(T)/25 Georgian Bay / Baie Georgienne – Obstruction: Scientific and Subsurface Moorings**

Reference: Notice 610(T)/25 is cancelled.

Reference chart: 2201, 2261, 2282, 2291

Sixteen subsurface moorings and one surface mooring temporarily established along the shoreline near Bruce Power at the following coordinates:

Subsurface Moorings

| | | | |
|------|----------------------------|-------|----------------------------|
| (1) | 44° 26.017'N 081° 30.857'W | (41) | 44° 19.801'N 081° 36.649'W |
| (7) | 44° 22.858'N 081° 34.021'W | (43) | 44° 15.846'N 081° 37.043'W |
| (8) | 44° 22.052'N 081° 35.001'W | (45) | 44° 25.244'N 081° 29.423'W |
| (9) | 44° 22.779'N 081° 32.357'W | (46) | 44° 20.833'N 081° 33.944'W |
| (12) | 44° 21.698'N 081° 34.509'W | (47) | 44° 20.568'N 081° 34.039'W |
| (29) | 44° 15.833'N 081° 38.578'W | (ol3) | 44° 45.321'N 081° 18.556'W |
| (30) | 44° 15.837'N 081° 36.701'W | (B) | 44° 13.890'N 081° 37.395'W |
| (39) | 44° 25.559'N 081° 30.119'W | (F) | 44° 34.028'N 081° 21.425'W |

Surface Mooring

(SPOT- 44° 23.404'N 081° 32.310'W
32256C)

(NW-C-3250-25)

***1016/25 Port of Thunder Bay – Survey Results Charted**

Reference: Notice 1124(T)/24 is cancelled (Chart 2314).

The survey results have been charted on chart 2314.

Preliminary Notices

No notices applicable for this edition.

Section 2: Chart Corrections

1223 - Chenal du Bic et les approches/and approaches - New Edition - 21-MAR-2008 - NAD 1983

24-OCT-2025

LNMD. 04-APR-2025

| | | |
|--------|---|---|
| Delete | sector lights Fl 2s 34m 12M and Fl R 6s 34m 5M and limits of arcs of visibility (See Chart 1, P40.1) | 48°24'55.6"N 068°53'34.0"W (Q2025049) LL(1748) DFO(6411294-01) |
| Add | lighthouse with legend Phare/Lt Ho Aband (See Chart 1, E2) | 48°24'55.6"N 068°53'34.0"W DFO(6411294-02) |
| Add | depth of 8,6 metres (See Chart 1, I10) | 48°24'10.2"N 068°55'53.8"W DFO(6411310-01) |
| Delete | depth of 1,2 metres (See Chart 1, I10) | 48°24'11.5"N 068°55'43.7"W DFO(6411310-02) |
| Add | depth of 0,6 metres (See Chart 1, I10) | 48°24'11.6"N 068°55'43.2"W DFO(6411310-03) |
| Delete | depth of 5,8 metres (See Chart 1, I10) | 48°24'13.8"N 068°55'14.8"W DFO(6411310-04) |
| Add | depth of 5,2 metres (See Chart 1, I10) | 48°24'14.6"N 068°55'14.2"W DFO(6411310-05) |
| Add | depth of 10,8 metres (See Chart 1, I10) | 48°24'00.5"N 068°54'56.1"W DFO(6411310-06) |
| Add | depth of 8,6 metres (See Chart 1, I10) | 48°24'11.8"N 068°54'13.6"W DFO(6411310-07) |
| Add | depth of 9,4 metres (See Chart 1, I10) | 48°23'56.4"N 068°54'17.8"W DFO(6411310-08) |
| Add | depth of 7,9 metres (See Chart 1, I10) | 48°23'02.2"N 068°54'39.4"W DFO(6411310-09) |

1236 - Pointe des Monts aux/to Escoumins - New Edition - 26-OCT-2012 - NAD 1983

24-OCT-2025

LNMD. 04-APR-2025

| | | |
|--------|---|---|
| Delete | sector lights Fl 2s34m12M and Fl R 6s34m5M and limits of arcs of visibility (See Chart 1, P40.1) | 48°24'55.6"N 068°53'34.0"W (Q2025049) LL(1748) DFO(6411294-01) |
| Add | lighthouse with legend Phare/Lt Ho Aband (See Chart 1, E2) | 48°24'55.6"N 068°53'34.0"W DFO(6411294-02) |

| | | |
|---|---|--|
| Delete | depth of 1,2 metres (See Chart 1, I10) | 48°24'11.5"N 068°55'43.7"W <i>DFO(6411310-02)</i> |
| Add | depth of 0,6 metres (See Chart 1, I10) | 48°24'11.6"N 068°55'43.2"W <i>DFO(6411310-03)</i> |
| Delete | depth of 15,9 metres (See Chart 1, I10) | 48°17'50.2"N 069°07'08.1"W <i>DFO(6411310-10)</i> |
| Add | depth of 15,4 metres (See Chart 1, I10) | 48°17'50.5"N 069°07'07.5"W <i>DFO(6411310-11)</i> |
| 1310 - Section A-B - New Edition - 07-JUN-2019 - NAD 1983 | | |
| 10-OCT-2025 | | LNMD. 21-FEB-2025 |
| Delete | orange beacon Bn Or (See Chart 1, Q81) | 45°38'58.0"N 073°27'50.9"W <i>(Q2025069) LL(7348.2) DFO(6411314-01)</i> |
| 1312 - Lac Saint-Pierre - New Edition - 10-MAY-2019 - NAD 1983 | | |
| 24-OCT-2025 | | LNMD. 26-SEP-2025 |
| Delete | orange beacon Bn Or (See Chart 1, Q81) | 46°14'43.2"N 072°52'42.3"W <i>(Q2025068) LL(7139.1) DFO(6411313-01)</i> |
| 1320 - Île du Bic au/to Cap de la Tête au Chien - New Chart - 26-AUG-2011 - NAD 1983 | | |
| 24-OCT-2025 | | LNMD. 04-APR-2025 |
| Delete | sector lights Fl 2s34m12M and Fl R 6s34m5M and limits of arcs of visibility (See Chart 1, P40.1) | 48°24'55.6"N 068°53'34.0"W <i>(Q2025049) LL(1748) DFO(6411294-01)</i> |
| Add | lighthouse with legend Phare/Lt Ho Aband (See Chart 1, E2) | 48°24'55.6"N 068°53'34.0"W <i>DFO(6411294-02)</i> |
| Add | depth of 8,6 metres (See Chart 1, I10) | 48°24'10.2"N 068°55'53.8"W <i>DFO(6411310-01)</i> |
| Delete | depth of 1,2 metres (See Chart 1, I10) | 48°24'11.5"N 068°55'43.7"W <i>DFO(6411310-02)</i> |
| Add | depth of 0,6 metres (See Chart 1, I10) | 48°24'11.6"N 068°55'43.2"W <i>DFO(6411310-03)</i> |
| Delete | depth of 5,8 metres (See Chart 1, I10) | 48°24'13.8"N 068°55'14.8"W <i>DFO(6411310-04)</i> |
| Add | depth of 5,2 metres (See Chart 1, I10) | 48°24'14.6"N 068°55'14.2"W <i>DFO(6411310-05)</i> |

| | | |
|--------|--|--|
| Add | depth of 9,4 metres (See Chart 1, I10) | 48°23'56.4"N 068°54'17.8"W <i>DFO(6411310-08)</i> |
| Delete | depth of 15,9 metres (See Chart 1, I10) | 48°17'50.2"N 069°07'08.1"W <i>DFO(6411310-10)</i> |
| Add | depth of 15,4 metres (See Chart 1, I10) | 48°17'50.5"N 069°07'07.5"W <i>DFO(6411310-11)</i> |

1350 - Canal de Saint-Ours/Saint-Ours Canal - Sheet/Feuille 2 - New Edition - 12-JUN-2020 - NAD 1983

10-OCT-2025

LNMD. 26-SEP-2025

| | | |
|------------|--|---|
| Reposition | white and orange control lighted pillar buoy FI Y, marked PC1 (See Chart 1, Qk) | from 45°52'02.7"N 073°08'52.8"W to 45°52'03.4"N 073°08'53.3"W (Q2025054) LL(2200) <i>DFO(6411303-02)</i> |
| Reposition | yellow cautionary lighted pillar buoy FI Y, marked DANE (See Chart 1, Qi) | from 45°51'55.8"N 073°08'55.6"W to 45°51'56.2"N 073°08'56.6"W (Q2025055) LL(2204.63) <i>DFO(6411303-03)</i> |
| Reposition | yellow cautionary lighted pillar buoy FI Y, marked DANW (See Chart 1, Qi) | from 45°51'55.4"N 073°09'00.2"W to 45°51'55.7"N 073°09'00.3"W (Q2025056) LL(2204.64) <i>DFO(6411303-04)</i> |
| Reposition | yellow cautionary lighted pillar buoy FI Y, marked DANC (See Chart 1, Qi) | from 45°51'55.6"N 073°08'57.9"W to 45°51'56.0"N 073°08'58.4"W (Q2025057) LL(2204.62) <i>DFO(6411303-05)</i> |
| Add | yellow cautionary lighted pillar buoy FI Y, marked DANAV (See Chart 1, Qi) | 45°51'56.5"N 073°08'54.8"W (Q2025058) LL(2204.65) <i>DFO(6411303-06)</i> |
| Add | yellow cautionary lighted pillar buoy FI Y, marked DANZ (See Chart 1, Qi) | 45°51'41.4"N 073°08'48.1"W (Q2025060) LL(2204.58) <i>DFO(6411303-07)</i> |

1350 - Ruisseau Lahaise à/to Saint-Antoine-sur-Richelieu - Sheet/Feuille 2 - New Edition - 12-JUN-2020 - NAD 1983

10-OCT-2025

LNMD. 26-SEP-2025

| | | |
|------------|--|--|
| Reposition | white and orange control lighted pillar buoy FI Y, marked PC1 (See Chart 1, Qk) | from 45°52'02.7"N 073°08'52.8"W to 45°52'03.4"N 073°08'53.3"W (Q2025054) LL(2200) <i>DFO(6411303-02)</i> |
|------------|--|--|

1350 - Saint-Antoine-sur-Richelieu à/to Île aux Cerfs - Sheet/Feuille 3 - New Edition - 12-JUN-2020 - NAD 1983

31-OCT-2025

LNMD. 10-OCT-2025

| | | |
|-----|---|--|
| Add | private white and orange control spar buoy (See Chart 1, Qk) | 45°41'39.2"N 073°11'18.1"W <i>DFO(6411298-01)</i> |
| Add | private white and orange control spar buoy (See Chart 1, Qk) | 45°41'32.8"N 073°11'17.5"W <i>DFO(6411298-02)</i> |
| Add | private white and orange control spar buoy (See Chart 1, Qk) | 45°40'15.7"N 073°11'30.7"W <i>DFO(6411298-03)</i> |

| | | |
|-----|--|--|
| Add | private white and orange control spar buoy (See Chart 1, Qk) | 45°39'46.7"N 073°11'37.7"W <i>DFO(6411298-04)</i> |
| Add | private white and orange control spar buoy (See Chart 1, Qk) | 45°39'43.2"N 073°11'43.9"W <i>DFO(6411298-05)</i> |
| Add | private white and orange keep out spar buoy (See Chart 1, Qj) | 45°38'47.9"N 073°12'12.4"W <i>DFO(6411298-06)</i> |
| Add | private white and orange keep out spar buoy (See Chart 1, Qj) | 45°38'48.5"N 073°12'01.1"W <i>DFO(6411298-07)</i> |

1350 - Île aux Cerfs à/to Otterburn-Park - Sheet/Feuille 4 - New Edition - 12-JUN-2020 - NAD 1983

| | | |
|-------------|--|--|
| 31-OCT-2025 | | LNm/D. 10-OCT-2025 |
| Add | private white and orange keep out spar buoy (See Chart 1, Qj) | 45°38'47.9"N 073°12'12.4"W <i>DFO(6411298-06)</i> |
| Add | private white and orange keep out spar buoy (See Chart 1, Qj) | 45°38'48.5"N 073°12'01.1"W <i>DFO(6411298-07)</i> |
| Add | private white and orange control spar buoy (See Chart 1, Qk) | 45°38'03.1"N 073°11'16.4"W <i>DFO(6411298-08)</i> |
| Add | private white and orange control spar buoy (See Chart 1, Qk) | 45°37'41.0"N 073°11'04.1"W <i>DFO(6411298-09)</i> |

2016 - Charity Shoal to/à Gull Bar including / y compris Long Point - New Chart - 04-MAR-2022 - World Geodetic System 1984

| | | |
|-------------|--|--|
| 24-OCT-2025 | | LNm/D. 19-JUL-2024 |
| Add | wreck WK with known depth of 24 metres (See Chart 1, K26) | 43°58'32.9"N 076°46'26.9"W <i>DFO(6605538-01)</i> |
| Add | wreck WK with known depth of 16.8 metres (See Chart 1, K26) | 43°56'51.6"N 076°47'33.8"W <i>DFO(6605538-06)</i> |

2019 - Adolphus Reach to /à Big Bay - New Chart - 04-JUN-2021 - World Geodetic System 1984

| | | |
|-------------|--|---|
| 31-OCT-2025 | | LNm/D. 21-FEB-2025 |
| Delete | light, marked FI (See Chart 1, P1) This notice affects Electronic Navigational Chart: CA573494 | 44°09'47.8"N 077°07'19.2"W <i>(B2025031) LL(459) DFO(6605557-01)</i> |

2019 - Telegraph Narrows - New Chart - 04-JUN-2021 - World Geodetic System 1984

31-OCT-2025

LNMD. 21-FEB-2025

Delete light, marked FI
(See Chart 1, P1)
This notice affects Electronic Navigational Chart: CA573494
44°09'47.8"N 077°07'19.2"W
(B2025031) LL(459) DFO(6605557-01)

2060 - Main Duck Island to/à Scotch Bonnet Island - New Edition - 28-DEC-2001 - NAD 1983

24-OCT-2025

LNMD. 15-SEP-2023

Add wreck WK with known depth of 13 fathoms
(See Chart 1, K26)
43°58'32.9"N 076°46'26.9"W
DFO(6605538-01)

Add wreck WK with known depth of 7½ fathoms
(See Chart 1, K26)
43°57'49.0"N 076°49'00.0"W
DFO(6605538-02)

Add wreck WK with known depth of 10 fathoms
(See Chart 1, K26)
This notice affects Electronic Navigational Chart: CA273096
43°57'55.4"N 076°48'06.7"W
DFO(6605538-03)

Add wreck WK with known depth of 13 fathoms
(See Chart 1, K26)
This notice affects Electronic Navigational Chart: CA273096
43°55'54.6"N 076°44'14.8"W
DFO(6605538-04)

Add wreck WK with known depth of 16 fathoms
(See Chart 1, K26)
This notice affects Electronic Navigational Chart: CA273096
44°00'38.6"N 076°44'36.2"W
DFO(6605538-05)

Add wreck WK with known depth of 9 fathoms
(See Chart 1, K26)
43°56'51.6"N 076°47'33.8"W
DFO(6605538-06)

2077 - Lake Ontario/Lac Ontario (Western Portion/Partie Ouest) - New Edition - 17-JUL-2020 - NAD 1983

24-OCT-2025

LNMD. 13-OCT-2023

Amend yellow cautionary lighted pillar buoy FI Y (priv), marked WY to read
yellow cautionary lighted spar buoy FI Y (Priv), marked WY
(See Chart 1, Qi)
This notice affects Electronic Navigational Chart: CA273096
43°14'44.6"N 079°36'08.6"W
(B2025029) LL(538.2) DFO(6605555-01)

Reposition yellow cautionary lighted spar buoy FI Y (priv), marked WY
(See Chart 1, Qi)
This notice affects Electronic Navigational Chart: CA273096
from 43°14'44.6"N 079°36'08.6"W
to 43°15'07.8"N 079°36'08.2"W
(B2025029) LL(538.2) DFO(6605555-02)

Amend yellow cautionary lighted pillar buoy FI Y (priv), marked WT to read
yellow cautionary lighted spar buoy FI Y (Priv), marked WT
(See Chart 1, Qi)
This notice affects Electronic Navigational Chart: CA273096
43°14'29.1"N 079°35'29.4"W
(B2025030) LL(538.3) DFO(6605556-01)

Reposition yellow cautionary lighted spar buoy FI Y (priv), marked WT
(See Chart 1, Qi)
This notice affects Electronic Navigational Chart: CA273096
from 43°14'29.1"N 079°35'29.4"W
to 43°14'51.1"N 079°35'16.1"W
(B2025030) LL(538.3) DFO(6605556-02)

| | | |
|-----|--|--|
| Add | crib which covers and uncovers 0.3m, Rep (2025) (See Chart 1, Fb) | 43°40'15.6"N 079°16'18.0"W <i>DFO(6605561-01)</i> |
|-----|--|--|

2123 - Pelee Passage to/à la Detroit River - New Edition - 27-JAN-2006 - NAD 1983
17-OCT-2025

LNMD/D. 13-JUN-2025

| | | |
|--------|--|---|
| Delete | green port hand lighted pillar buoy FI G 6s, marked 1 (See Chart 1, Qc) | 41°24'32.1"N 082°32'14.0"W <i>LL(4485) DFO(6605550-01)</i> |
|--------|--|---|

| | | |
|--------|--|---|
| Delete | red starboard hand conical buoy, marked 2 (See Chart 1, Qb) | 41°24'34.2"N 082°32'18.4"W <i>LL(4490) DFO(6605550-02)</i> |
|--------|--|---|

2202 - Twelve Mile Bay to/à Rose Island - Sheet/Feuille 3 - New Edition - 05-JAN-2007 - NAD 1983
31-OCT-2025

LNMD/D. 31-JAN-2025

| | | |
|--------|--|--|
| Delete | depth of 15 feet (See Chart 1, I10) | 45°08'33.9"N 080°05'44.2"W <i>DFO(6605560-01)</i> |
|--------|--|--|

| | | |
|-----|---|--|
| Add | rock awash at chart datum, Rep (2025) (See Chart 1, K12) | 45°08'33.5"N 080°05'43.6"W <i>DFO(6605560-02)</i> |
|-----|---|--|

| | | |
|--------|---------------------------------------|--|
| Delete | depth of 5 feet (See Chart 1, I10) | 45°10'01.5"N 080°08'01.4"W <i>DFO(6605560-03)</i> |
|--------|---------------------------------------|--|

| | | |
|-----|---|--|
| Add | rock with known depth of 2 feet, dangerous to surface navigation, Rep (2025) (See Chart 1, K14) | 45°10'01.9"N 080°08'01.0"W <i>DFO(6605560-04)</i> |
|-----|---|--|

4001 - Gulf of Maine to Strait of Belle Isle / au Detroit de Belle Isle - New Edition - 01-DEC-1995 - NAD 1983
24-OCT-2025

LNMD/D. 27-JUN-2025

| | | |
|-----|--|--|
| Add | subsurface Ocean Data Acquisition System (ODAS) with known depth of 35 metres (See Chart 1, L25) | 52°45'10.8"N 051°40'45.6"W <i>DFO(6312051-03)</i> |
|-----|--|--|

| | | |
|--------|---|--|
| Delete | obstruction with known depth of 30 metres with legend 'Obstn' (See Chart 1, K41) | 52°39'43.9"N 052°06'01.8"W <i>DFO(6312051-06)</i> |
|--------|---|--|

| | | |
|--------|---|--|
| Delete | obstruction with known depth of 40 metres with legend 'Obstn' (See Chart 1, K41) | 52°45'36.2"N 051°51'18.2"W <i>DFO(6312051-07)</i> |
|--------|---|--|

| | | |
|--------|---|--|
| Delete | obstruction with known depth of 40 metres with legend 'Obstn' (See Chart 1, K41) | 52°48'59.5"N 051°41'18.7"W <i>DFO(6312051-08)</i> |
|--------|---|--|

4013 - Halifax to / à Sydney - New Edition - 06-SEP-2002 - NAD 1983

24-OCT-2025

LNMD. 12-SEP-2025

Delete light Fl 4 s 68 ft 8 M
(See Chart 1, P1)

46°07'01.2"N 063°10'55.0"W

(G2025109) LL(1007) DFO(6312057-01)

4022 - Cabot Strait and approaches / Détroit de Cabot et les approches - New Edition - 17-JAN-2003 - NAD 1983

17-OCT-2025

LNMD. 23-MAY-2025

Delete red and white fairway lighted pillar bell buoy Mo(A)
(See Chart 1, Qd)

46°50'30.9"N 060°48'18.7"W

(G2025106) LL(860.5) DFO(6312056-01)

4023 - Northumberland Strait / Détroit de Northumberland - New Edition - 27-DEC-2002 - World Geodetic System 1984

24-OCT-2025

LNMD. 04-APR-2025

Delete light Fl 4 s 68 ft 8 M
(See Chart 1, P1)

46°06'58.7"N 063°10'49.3"W

(G2025109) LL(1007) DFO(6312057-01)

4116 - Approaches to / Approches à Saint John - New Edition - 31-AUG-2007 - NAD 1983

31-OCT-2025

LNMD. 15-AUG-2025

Replace green port hand spar buoy, marked KS1 with green port hand lighted
spar buoy Fl G, marked KS1
(See Chart 1, Qc)

45°07'07.3"N 066°20'36.9"W

(F2025012) LL(92.1) DFO(6312066-01)

4233 - Cape Canso to / à Country Island - New Chart - 11-JAN-1991 - NAD 1983

31-OCT-2025

LNMD. 25-APR-2025

Add wreck Wk with known depth of 51 metres
(See Chart 1, K26)

45°13'30.4"N 060°58'23.3"W

DFO(6312074-01)

4281 - Canso Harbour and Approaches / et les Approches - New Edition - 27-SEP-2013 - NAD 1983

17-OCT-2025

LNMD. 05-NOV-2021

Add depth of 10.4 metres
(See Chart 1, I10)

45°17'08.3"N 060°54'27.8"W

DFO(6312075-01)

4320 - Egg Island to / à West Ironbound Island - New Edition - 26-SEP-1997 - NAD 1983

31-OCT-2025

LNMD. 25-JUL-2025

Delete legend 'WHIS' against red and white fairway pillar light buoy Mo(A),
marked AT
(See Chart 1, R21, R15)

44°26'42.5"N 063°53'28.5"W

(F2025013) LL(490) DFO(6312067-01)

4321 - Cape Canso to / à Liscomb Island - New Edition - 08-OCT-2004 - NAD 1983

31-OCT-2025

LNMD. 11-JUL-2025

Add wreck Wk with known depth of 51 metres
(See Chart 1, K26)

45°13'30.4"N 060°58'23.3"W

DFO(6312074-01)

4335 - Strait of Canso and Approaches / et les approches - New Edition - 04-JAN-2008 - NAD 1983

17-OCT-2025

LNMD. 04-APR-2025

Replace depth of 9.4 metres with depth of 10.4 metres
(See Chart 1, I10)

45°17'08.3"N 060°54'27.8"W

DFO(6312075-02)

4386 - St. Margaret's Bay - New Edition - 16-JUL-2004 - NAD 1983

31-OCT-2025

LNMD. 25-JUL-2025

Delete legend 'WHIS' against red and white fairway pillar light buoy Mo(A),
marked AT
(See Chart 1, R21, R15)

44°26'42.7"N 063°53'33.4"W

(F2025013) LL(490) DFO(6312067-01)

4405 - Pictou Island to / aux Tryon Shoals - New Edition - 21-FEB-2003 - NAD 1983

24-OCT-2025

LNMD. 16-AUG-2024

Delete light Fl 4 s 68 ft 8 M
(See Chart 1, P1)

46°07'01.2"N 063°10'50.3"W

(G2025109) LL(1007) DFO(6312057-01)

4464 - Chéticamp to / à Cape St. Lawrence - New Edition - 27-APR-2018 - NAD 1983

17-OCT-2025

LNMD. 30-JUN-2023

Delete red and white fairway lighted pillar bell buoy Mo(A), marked VC
(See Chart 1, Qd)

46°50'30.1"N 060°48'17.6"W

(G2025106) LL(860.5) DFO(6312056-01)

4466 - Hillsborough Bay - New Edition - 21-MAR-2003 - NAD 1983

24-OCT-2025

LNMD. 20-DEC-2024

Delete light Fl 4 s 68 ft 8 M
(See Chart 1, P1)

46°07'00.3"N 063°10'49.0"W

(G2025109) LL(1007) DFO(6312057-01)

4909 - Cocagne et / and Shediac - New Chart - 17-JUN-1988 - NAD 1983

10-OCT-2025

LNMD. 18-JUL-2025

Add breakwater
(See Chart 1, F4.1)

joining 46°14'27.5"N 064°31'37.1"W
46°14'29.1"N 064°31'36.6"W
46°14'30.3"N 064°31'37.0"W
46°14'31.2"N 064°31'38.5"W
and 46°14'31.6"N 064°31'43.4"W
DFO(6312005-02)

Add light Fl G
(See Chart 1, P1)

46°14'31.6"N 064°31'43.1"W

(G2025088) LL(1111.01) DFO(6312005-03)

4909 - Quai / Wharf Pointe du Chêne - New Chart - 17-JUN-1988 - NAD 1983

10-OCT-2025

LNMD. 18-JUL-2025

Affix patch
Download Patch - https://www.notmar.gc.ca/chsftp/patches/4909_6312005_1_202509110756.pdf

46°14'27.1"N 064°31'41.6"W

DFO(6312005-01)

4940 - Caribou Ferry Terminal - New Chart - 24-SEP-2021 - NAD 1983
10-OCT-2025

LNMD. 15-AUG-2025

| | | |
|---------|--|--|
| Replace | depth of 8.4 metres with depth of 8 metres (See Chart 1, I10) | 45°44'22.4"N 062°41'17.6"W <i>DFO(6312068-01)</i> |
| Replace | depth of 4.5 metres with depth of 4.2 metres (See Chart 1, I10) | 45°44'23.6"N 062°41'12.3"W <i>DFO(6312068-02)</i> |
| Replace | depth of 6 metres with depth of 5.6 metres (See Chart 1, I10) | 45°44'25.0"N 062°41'11.2"W <i>DFO(6312068-03)</i> |
| Replace | depth of 6.3 metres with depth of 5.6 metres (See Chart 1, I10) | 45°44'25.6"N 062°41'10.0"W <i>DFO(6312068-04)</i> |
| Delete | depth of 3.7 metres (See Chart 1, I10) | 45°44'28.5"N 062°41'08.2"W <i>DFO(6312068-05)</i> |
| Add | depth of 3.4 metres (See Chart 1, I10) | 45°44'28.3"N 062°41'08.9"W <i>DFO(6312068-06)</i> |
| Replace | depth of 4.6 metres with depth of 4.2 metres (See Chart 1, I10) | 45°44'29.5"N 062°41'07.5"W <i>DFO(6312068-07)</i> |
| Replace | depth of 5.9 metres with depth of 5.6 metres (See Chart 1, I10) | 45°44'35.5"N 062°41'18.3"W <i>DFO(6312068-08)</i> |

4940 - Wood Islands Ferry Terminal - New Chart - 24-SEP-2021 - NAD 1983
10-OCT-2025

LNMD. 15-AUG-2025

| | | |
|---------|--|--|
| Replace | depth of 4.2 metres with depth of 3.9 metres (See Chart 1, I10) | 45°56'51.9"N 062°45'07.8"W <i>DFO(6312069-01)</i> |
| Replace | depth of 3.7 metres with depth of 3.2 metres (See Chart 1, I10) | 45°56'53.2"N 062°45'04.9"W <i>DFO(6312069-02)</i> |
| Replace | depth of 2.8 metres with depth of 2.2 metres (See Chart 1, I10) | 45°57'02.7"N 062°45'09.8"W <i>DFO(6312069-03)</i> |
| Replace | depth of 4.2 metres with depth of 3.7 metres (See Chart 1, I10) | 45°57'04.2"N 062°45'04.0"W <i>DFO(6312069-04)</i> |
| Replace | depth of 1.3 metres with depth of 1 metre (See Chart 1, I10) | 45°57'05.0"N 062°45'09.5"W <i>DFO(6312069-05)</i> |

| | | |
|---------|--|--|
| Add | drying height of 0.3 metres (See Chart 1, I15) | 45°57'05.9"N 062°45'12.0"W <i>DFO(6312069-06)</i> |
| Replace | depth of 4.3 metres with depth of 3.7 metres (See Chart 1, I10) | 45°57'05.5"N 062°45'03.6"W <i>DFO(6312069-07)</i> |
| Replace | depth of 1 metre with depth of 0.7 metres (See Chart 1, I10) | 45°57'06.5"N 062°45'08.7"W <i>DFO(6312069-08)</i> |
| Replace | depth of 0.8 metres with depth of 0.5 metres (See Chart 1, I10) | 45°57'08.7"N 062°45'07.9"W <i>DFO(6312069-09)</i> |
| Replace | depth of 4.1 metres with depth of 3.8 metres (See Chart 1, I10) | 45°57'10.0"N 062°45'03.9"W <i>DFO(6312069-10)</i> |
| Replace | depth of 4.2 metres with depth of 3.7 metres (See Chart 1, I10) | 45°57'10.7"N 062°45'03.7"W <i>DFO(6312069-11)</i> |
| Replace | depth of 4.1 metres with depth of 3.4 metres (See Chart 1, I10) | 45°57'11.5"N 062°45'02.6"W <i>DFO(6312069-12)</i> |
| Replace | depth of 1.4 metres with depth of 1.1 metres (See Chart 1, I10) | 45°57'08.9"N 062°44'54.7"W <i>DFO(6312069-13)</i> |
| Add | depth of 1.9 metres (See Chart 1, I10) | 45°57'11.7"N 062°44'56.4"W <i>DFO(6312069-14)</i> |
| Delete | depth of 2.6 metres (See Chart 1, I10) | 45°57'12.2"N 062°44'55.5"W <i>DFO(6312069-15)</i> |
| Add | depth of 1.7 metres (See Chart 1, I10) | 45°57'12.4"N 062°44'55.9"W <i>DFO(6312069-16)</i> |

5001 - Labrador Sea / Mer du Labrador - New Edition - 17-JAN-2003 - NAD 1983
24-OCT-2025

LNMD. 29-APR-2022

| | | |
|--------|---|--|
| Add | subsurface Ocean Data Acquisition System (ODAS) with known depth of 35 metres (See Chart 1, L25) | 52°45'10.8"N 051°40'45.6"W <i>DFO(6312051-03)</i> |
| Delete | obstruction with known depth of 30 metres with legend 'Obstn' (See Chart 1, K41) | 52°39'43.9"N 052°06'01.8"W <i>DFO(6312051-06)</i> |
| Delete | obstruction with known depth of 40 metres with legend 'Obstn' (See Chart 1, K41) | 52°45'36.2"N 051°51'18.2"W <i>DFO(6312051-07)</i> |

| | | |
|--------|---|--|
| Delete | obstruction with known depth of 40 metres with legend 'Obstn' (See Chart 1, K41) | 52°48'55.6"N 051°41'07.8"W <i>DFO(6312051-08)</i> |
|--------|---|--|

5316 - Shaftesbury Inlet to/à Ashe Inlet - New Edition - 16-MAY-2003 - NAD 1983
31-OCT-2025

| | | |
|-----|---|--|
| | | LNМ/D. 28-NOV-2008 |
| Add | depth of 3 fathoms 3 feet (See Chart 1, I10) | 62°49'15.3"N 070°38'40.8"W <i>DFO(6605558-03)</i> |
| Add | depth of 5 fathoms 1 foot (See Chart 1, I10) | 62°47'05.8"N 070°29'52.7"W <i>DFO(6605558-04)</i> |

5450 - Hudson Strait/Détroit d'Hudson - New Edition - 08-JUL-2005 - Unknown
31-OCT-2025

| | | |
|--------|---|--|
| | | LNМ/D. 11-JUL-2025 |
| Delete | depth of 13 fathoms (See Chart 1, I10) | 62°50'25.9"N 070°41'50.8"W <i>DFO(6605558-01)</i> |
| Add | depth of 4 fathoms 5 feet (See Chart 1, I10) | 62°49'46.0"N 070°40'36.8"W <i>DFO(6605558-02)</i> |
| Add | depth of 3 fathoms 3 feet (See Chart 1, I10) | 62°49'15.3"N 070°38'40.8"W <i>DFO(6605558-03)</i> |
| Add | depth of 5 fathoms 1 foot (See Chart 1, I10) | 62°47'05.8"N 070°29'52.7"W <i>DFO(6605558-04)</i> |

5625 - Ice Hunter Rock to/à Chesterfield Narrows - New Edition - 28-DEC-2018 - World Geodetic System 1984
17-OCT-2025

| | | |
|-----|---|--|
| | | LNМ/D. 20-SEP-2024 |
| Add | depth of 2.2 metres (See Chart 1, I10) This notice affects Electronic Navigational Chart: CA473451 | 63°58'59.5"N 094°20'03.1"W <i>DFO(6605554-01)</i> |
| Add | depth of 3 metres (See Chart 1, I10) This notice affects Electronic Navigational Chart: CA473451 | 63°59'21.2"N 094°19'36.7"W <i>DFO(6605554-02)</i> |
| Add | obstruction with known depth of 2.8 metres (See Chart 1, K41) This notice affects Electronic Navigational Chart: CA473451 | 63°59'13.9"N 094°21'16.7"W <i>DFO(6605554-03)</i> |

5625 - Schooner Harbour to/à Baker Lake - New Edition - 28-DEC-2018 - World Geodetic System 1984
17-OCT-2025

| | | |
|-----|---|--|
| | | LNМ/D. 20-SEP-2024 |
| Add | obstruction with known depth of 2.8 metres (See Chart 1, K41) This notice affects Electronic Navigational Chart: CA473451 | 63°59'13.9"N 094°21'16.7"W <i>DFO(6605554-03)</i> |

5626 - Baker Lake Harbour - New Edition - 19-JUL-2019 - World Geodetic System 1984
31-OCT-2025

| | | |
|-----|---|----------------------------|
| Add | obstruction with known depth of 3.6 metres, Rep (2025) (See Chart 1, K41) This notice affects Electronic Navigational Chart: CA373481, CA573455 | 64°18'28.7"N 096°03'04.0"W |
| | | <i>DFO(6605563-01)</i> |
| Add | obstruction with known depth of 1.8 metres, Rep (2025) (See Chart 1, K41) This notice affects Electronic Navigational Chart: CA373481, CA573455 | 64°18'17.4"N 096°02'14.0"W |
| | | <i>DFO(6605563-02)</i> |
| Add | obstruction with known depth of 1.5 metres, Rep (2025) (See Chart 1, K41) This notice affects Electronic Navigational Chart: CA373481, CA573455 | 64°18'12.2"N 096°01'57.6"W |
| | | <i>DFO(6605563-03)</i> |

6201 - Lake of the Woods / Lac des Bois - Sheet/Feuille 1 - New Edition - 09-AUG-2002 - NAD 1983
10-OCT-2025

| | | |
|--------|---------------------------------------|----------------------------------|
| Delete | light, marked FI (See Chart 1, P1) | 49°12'46.0"N 094°56'45.0"W |
| | | <i>LL(16963) DFO(6605549-01)</i> |

6211 - Big Traverse Bay - New Edition - 28-FEB-2020 - NAD 1983
10-OCT-2025

| | | |
|--------|---|----------------------------------|
| Delete | light, marked FI 6s 35ft (See Chart 1, P1) | 49°12'46.0"N 094°56'45.0"W |
| | | <i>LL(16963) DFO(6605549-01)</i> |

6215 - Basil Channel to/à Sturgeon Channel - New Edition - 28-FEB-2020 - NAD 1983
10-OCT-2025

| | | |
|--------|---|----------------------------------|
| Delete | light, marked FI 6s 35ft (See Chart 1, P1) | 49°12'46.0"N 094°56'45.0"W |
| | | <i>LL(16963) DFO(6605549-01)</i> |

7502 - Gulf of Boothia and/et Committee Bay - New Edition - 31-JUL-1998 - NAD 1983
10-OCT-2025

| | | |
|--------|---|----------------------------|
| Delete | depth of 12 metres (See Chart 1, I10) This notice affects Electronic Navigational Chart: CA373504 | 69°11'52.2"N 089°32'45.7"W |
| | | <i>DFO(6605552-02)</i> |
| Add | obstruction with known depth of 6.8 metres (See Chart 1, K41) This notice affects Electronic Navigational Chart: CA373504 | 69°11'23.0"N 089°32'42.0"W |
| | | <i>DFO(6605552-03)</i> |

7521 - Prince of Wales Strait - New Chart - 01-JUN-1984 - Unknown
17-OCT-2025

| | | |
|--------|--|----------------------------|
| Delete | depth of 81 metres (See Chart 1, I10) | 71°22'42.2"N 117°00'58.3"W |
| | | <i>DFO(6605553-01)</i> |

| | | |
|-----|--|----------------------------|
| Add | obstruction, depth unknown, Rep (2025) (See Chart 1, K40) | 71°22'36.8"N 117°01'20.6"W |
| | | <i>DFO(6605553-02)</i> |

| | | |
|-----|--|----------------------------|
| Add | obstruction, depth unknown, Rep (2025) (See Chart 1, K40) | 71°22'29.0"N 116°57'45.5"W |
| | | <i>DFO(6605553-03)</i> |

7573 - M'Clintock Channel, Larsen Sound and/et Franklin Strait - New Chart - 25-FEB-2000 - NAD 1983

| | | |
|-------------|--|--------------------|
| 31-OCT-2025 | | LNM/D. 25-OCT-2024 |
|-------------|--|--------------------|

| | | |
|--------|--|----------------------------|
| Delete | depth of 42 metres (See Chart 1, I10) | 71°21'05.5"N 096°54'46.6"W |
| | | <i>DFO(6605564-01)</i> |

| | | |
|-----|---|----------------------------|
| Add | obstruction with known depth of 6.4 metres Rep (2025) (See Chart 1, K41) | 71°21'03.7"N 096°53'52.6"W |
| | | <i>DFO(6605564-02)</i> |

| | | |
|-----|--|----------------------------|
| Add | obstruction with known depth of 21.7 metres Rep (2025) (See Chart 1, K41) | 71°20'38.2"N 096°55'33.9"W |
| | | <i>DFO(6605564-03)</i> |

7575 - Peel Sound and/et Prince Regent Inlet - New Edition - 14-OCT-2022 - World Geodetic System 1984

| | | |
|-------------|--|--------------------|
| 31-OCT-2025 | | LNM/D. 25-OCT-2024 |
|-------------|--|--------------------|

| | | |
|-----|---|----------------------------|
| Add | obstruction with known depth of 6.4 metres Rep (2025) (See Chart 1, K41) | 71°21'03.7"N 096°53'52.6"W |
| | | <i>DFO(6605564-02)</i> |

| | | |
|-----|--|----------------------------|
| Add | obstruction with known depth of 21.7 metres Rep (2025) (See Chart 1, K41) | 71°20'38.2"N 096°55'33.9"W |
| | | <i>DFO(6605564-03)</i> |

7578 - Pelly Bay - New Edition - 26-AUG-2022 - World Geodetic System 1984

| | | |
|-------------|--|--|
| 10-OCT-2025 | | |
|-------------|--|--|

| | | |
|--------|---|----------------------------|
| Delete | depth of 15 metres (See Chart 1, I10) This notice affects Electronic Navigational Chart: CA373504 | 69°11'19.1"N 089°32'22.2"W |
| | | <i>DFO(6605552-01)</i> |

| | | |
|-----|---|----------------------------|
| Add | obstruction with known depth of 6.8 metres (See Chart 1, K41) This notice affects Electronic Navigational Chart: CA373504 | 69°11'23.0"N 089°32'42.0"W |
| | | <i>DFO(6605552-03)</i> |

7621 - Amundsen Gulf - New Edition - 25-FEB-2022 - NAD 1983

| | | |
|-------------|--|--------------------|
| 17-OCT-2025 | | LNM/D. 12-SEP-2025 |
|-------------|--|--------------------|

| | | |
|--------|--|----------------------------|
| Delete | depth of 81 metres (See Chart 1, I10) | 71°22'42.2"N 117°00'58.3"W |
| | | <i>DFO(6605553-01)</i> |

| | | |
|-----|--|----------------------------|
| Add | obstruction, depth unknown, Rep (2025) (See Chart 1, K40) | 71°22'36.8"N 117°01'20.6"W |
| | | <i>DFO(6605553-02)</i> |

| | | |
|-----|--|----------------------------|
| Add | obstruction, depth unknown, Rep (2025) (See Chart 1, K40) | 71°22'29.0"N 116°57'45.5"W |
| | | <i>DFO(6605553-03)</i> |

7950 - Jones Sound, Norwegian Bay and Queens Channel - New Edition - 21-JUN-2013 - NAD 1983

31-OCT-2025

LNMD. 21-FEB-2025

| | | |
|-----|---|----------------------------|
| Add | obstruction with known depth of 20.7 metres (See Chart 1, K41) | 77°27'40.0"N 093°03'15.8"W |
| | | <i>DFO(6605567-01)</i> |

8048 - Cape Harrison to / à St. Michael Bay - New Edition - 20-JUN-2003 - NAD 1983

24-OCT-2025

LNMD. 20-DEC-2024

| | | |
|--------|---|----------------------------|
| Delete | subsurface Ocean Data Acquisition System (ODAS) with known depth of 92 metres (See Chart 1, L25) | 52°48'39.8"N 051°34'28.3"W |
| | | <i>DFO(6312051-01)</i> |

| | | |
|--------|---|----------------------------|
| Delete | subsurface Ocean Data Acquisition System (ODAS) with known depth of 86 metres (See Chart 1, L25) | 52°44'58.1"N 051°40'31.8"W |
| | | <i>DFO(6312051-02)</i> |

| | | |
|-----|---|----------------------------|
| Add | subsurface Ocean Data Acquisition System (ODAS) with known depth of 35 metres (See Chart 1, L25) | 52°45'10.8"N 051°40'45.6"W |
| | | <i>DFO(6312051-03)</i> |

| | | |
|--------|---|----------------------------|
| Delete | subsurface Ocean Data Acquisition System (ODAS) with known depth of 37 metres (See Chart 1, L25) | 52°40'59.1"N 051°57'48.8"W |
| | | <i>DFO(6312051-04)</i> |

| | | |
|-----|---|----------------------------|
| Add | subsurface Ocean Data Acquisition System (ODAS) with known depth of 35 metres (See Chart 1, L25) | 52°41'02.4"N 051°57'47.4"W |
| | | <i>DFO(6312051-05)</i> |

| | | |
|--------|---|----------------------------|
| Delete | obstruction with known depth of 30 metres with legend 'Obstn' (See Chart 1, K41) | 52°39'57.1"N 052°06'04.5"W |
| | | <i>DFO(6312051-06)</i> |

| | | |
|--------|---|----------------------------|
| Delete | obstruction with known depth of 40 metres with legend 'Obstn' (See Chart 1, K41) | 52°45'43.4"N 051°51'20.0"W |
| | | <i>DFO(6312051-07)</i> |

| | | |
|--------|---|----------------------------|
| Delete | obstruction with known depth of 40 metres with legend 'Obstn' (See Chart 1, K41) | 52°47'50.4"N 051°40'02.5"W |
| | | <i>DFO(6312051-08)</i> |

8049 - St. Michael Bay to/aux Gray Islands - New Edition - 07-MAR-2003 - Unknown

24-OCT-2025

LNMD. 23-AUG-2024

| | | |
|--------|---|----------------------------|
| Delete | subsurface Ocean Data Acquisition System (ODAS) with known depth of 92 metres (See Chart 1, L25) | 52°48'39.8"N 051°34'28.3"W |
| | | <i>DFO(6312051-01)</i> |

| | | |
|--------|---|----------------------------|
| Delete | subsurface Ocean Data Acquisition System (ODAS) with known depth of 86 metres (See Chart 1, L25) | 52°44'58.1"N 051°40'31.8"W |
| | | <i>DFO(6312051-02)</i> |

| | | |
|--------|---|--|
| Add | subsurface Ocean Data Acquisition System (ODAS) with known depth of 35 metres (See Chart 1, L25) | 52°45'10.8"N 051°40'45.6"W <i>DFO(6312051-03)</i> |
| Delete | subsurface Ocean Data Acquisition System (ODAS) with known depth of 37 metres (See Chart 1, L25) | 52°40'59.1"N 051°57'48.8"W <i>DFO(6312051-04)</i> |
| Add | subsurface Ocean Data Acquisition System (ODAS) with known depth of 35 metres (See Chart 1, L25) | 52°41'02.4"N 051°57'47.4"W <i>DFO(6312051-05)</i> |
| Delete | obstruction with known depth of 30 metres with legend 'Obstn' (See Chart 1, K41) | 52°39'53.3"N 052°06'10.2"W <i>DFO(6312051-06)</i> |
| Delete | obstruction with known depth of 40 metres with legend 'Obstn' (See Chart 1, K41) | 52°45'41.1"N 051°51'31.2"W <i>DFO(6312051-07)</i> |
| Delete | obstruction with known depth of 40 metres with legend 'Obstn' (See Chart 1, K41) | 52°47'50.4"N 051°40'02.5"W <i>DFO(6312051-08)</i> |

Section 3: Radio Aids to Marine Navigation Corrections

No corrections for this section.

Section 4: Canadian Sailing Directions Corrections

The following **Canadian Sailing Directions** volumes have recently been updated on the [Canadian Hydrographic Service website](#).

| No. | Title |
|------------------------|--|
| Atlantic Coast | |
| ATL 108 | Gulf of St. Lawrence (Southwest Portion) |
| Central Canada | |
| CEN 300 | General Information, Great Lakes |
| CEN 302 | Lake Ontario |
| CEN 309 | Trent-Severn Waterway |
| Northern Canada | |
| ARC 404 | Great Slave Lake and Mackenzie River |

Each volume includes a section entitled “Record of Changes” which lists all updates that are incorporated during the current calendar year.

Section 5: List of Lights, Buoys and Fog Signals Corrections

The amendments are **highlighted** and deletions are **crossed out**. For general and region-specific information on the List of Lights, click on the following links: [Newfoundland and Labrador Coast](#), [Atlantic Coast](#), [Inland Waters](#) and [Pacific Coast](#).

| No. | Name | Position ----- Latitude N. Longitude W. | Light Characteristics | Focal Height in m. above water | Nomi- nal Range | Description ----- Height in meters above ground | Remarks ----- Fog Signals |
|-----|------|--|--------------------------|--|-----------------------|--|---------------------------------|
|-----|------|--|--------------------------|--|-----------------------|--|---------------------------------|

ATLANTIC COAST

BAY OF FUNDY, N.B. – WEST (LL 5.8 – 114)

| | | | | | | | |
|-------------|------------------------------|---|----------|-------|-------|---|---|
| 83 H4112 | Lighthouse Point | On S. side of Beaver Harbour. 45 03 46.7 066 43 59.0 | Iso W 6s | 14.2 | 13 | White cylindrical tower with red upper portion. 8.6 | Operates 24 h. Year round. Horn – Blast 6 s; sil. 54 s. Horn points 159°. Chart:4115 Edn 10/25 (F25-017) |
| 102.16 | Round Reef light buoy J16 | Saint John Harbour, main channel. 45 15 28.0 066 03 20.0 | Fl R 4s | | | Red, marked "J16". | Year round. Chart:4117 Edn 10/25 (F25-015) |

CAPE BRETON ISLAND, N.S. (LL 704.85 – 882.5)

| | | | | | | | |
|-----|---|---|---------|-------|-------|---------------------------------|--|
| 745 | Fourchu light and whistle buoy N14 | S. of Fourchu Head. 45 42 00.2 060 12 45.6 | Fl R 4s | | | Red, marked "N14". | (Winter spar.) Seasonal. Chart:4374 Edn 10/25 (G25-107) |
| 746 | Fourchu light and bell buoy NC2 | W. entrance to Fourchu Harbour. 45 42 57.2 060 13 07.6 | Q R 1s | | | Red spar , marked "NC2". | Seasonal. Chart:4374 Edn 10/25 (G25-108) |

PRINCE EDWARD ISLAND (LL 942 – 1084.7)

| | | | | | | | |
|---------|--|---------------------------|---------|-------|-------|----------------------|--|
| 1060.1 | Southwest River Outer light buoy JM7 | 46 30 55.2 063 28 56.9 | Q G 1s | | | Green, marked "JM7". | Buoy may be repositioned due to shifting channel. Seasonal. Chart:4467 Edn 10/25 (G25-119) |
| 1060.11 | New London Harbour Entrance light buoy JM2 | 46 31 26.2 063 28 38.2 | Fl R 4s | | | Red, marked "JM2". | Seasonal. Chart:N/A Edn 10/25 (G25-116) |
| 1060.12 | New London Entrance light buoy JM3 | 46 31 23.7 063 28 32.9 | Fl G 4s | | | Green, marked "JM3". | Seasonal. Chart:N/A Edn 10/25 (G25-117) |
| 1060.22 | Southwest River Shoal light buoy JM9 | 46 30 38.4 063 28 58.6 | Fl G 4s | | | Green, marked "JM9". | Seasonal. Chart:N/A Edn 10/25 (G25-118) |

Notices to Mariners – Monthly Eastern Edition
Section 5: List of Lights, Buoys and Fog Signals Corrections

| No. | Name | Position ----- Latitude N. Longitude W. | Light Characteristics | Focal Height in m. above water | Nomi- nal Range | Description ----- Height in meters above ground | Remarks ----- Fog Signals |
|-----|------|--|--------------------------|--|-----------------------|--|---------------------------------|
|-----|------|--|--------------------------|--|-----------------------|--|---------------------------------|

NORTHUMBERLAND STRAIT – WEST (LL 1085 – 1165.9)

| | | | | | | | |
|---------------|------------------------|---|---------|------|-----------|--|---|
| 1128 H1376 | Richibucto Cape | On headland. 46 40 11.3 064 42 42.0 | Fl W 5s | 18.1 | 11 | White pyramid tower with red upper portion. 10.5 | Flash 1 s; eclipse 4 s. Year round. Chart:4909 Edn 10/25 (G25-120) |
|---------------|------------------------|---|---------|------|-----------|--|---|

ST. LAWRENCE RIVER, RIVIÈRE DU LOUP – SOREL (LL 1823.8 – 2185.1)

| | | | | | | | |
|-------------------|--|---|----------|------------|-----------|---|--|
| 1824.3 H2160.5 | Port de Gros- Cacouna North | End of breakwater. 47 55 50.4 069 31 13.4 | Fl Y 6s | 8.0 | 8 | Square skeleton tower. 5.0 | Flash 1 s; eclipse 5 s. Omnidirectional. Year round. Chart:1320 Edn 10/25 (Q25-077) |
| 1824.4 H2160.6 | Port de Gros- Cacouna | End of S. breakwater. 47 55 41.6 069 31 13.0 | Iso W 2s | 8.0 | 8 | Square skeleton tower. 4.9 | Omnidirectional. Year round. Chart:1320 Edn 10/25 (Q25-079) |
| 1826 H2162 | Pointe de la Rivière du Loup | On end of wharf. 47 50 52.4 069 34 14.0 | Iso G 2s | 10.2 | 10 | Pipe swing pole. 8.1 | Omnidirectional. Year round. Chart:1234 Edn 10/25 (Q25-080) |
| 1829 H2167 | Île aux Lièvres | On small island, SW. end of île aux Lièvres. 47 47 55.3 069 46 29.2 | Fl G 6s | 9.4 | 10 | Square skeleton tower, orange and white rectangular daymark. 7.9 | Flash 1 s; eclipse 5 s. Omnidirectional. Radar reflector. Operates at night only. Seasonal. Chart:1234 Edn 10/25 (Q25-081) |
| 1999 H2347 | Portneuf Wharf | On outer end of wharf, E. side. 46 40 56.2 071 52 38.3 | Iso R 2s | 8.9 | 10 | Cylindrical mast. 8.0 | Omnidirectional. Year round. Chart:1314 Edn 10/25 (Q25-072) |

ST. LAWRENCE RIVER, SOREL – PORT DE MONTRÉAL (LL 2272.2 – 2384)

| | | | | | | | |
|-------------------|---|---|-----------|------|-----------|--|---|
| 2278.5 H2451 | Route de l'île Saint-Ours downstream range | Lanoraie. 45 57 51.4 073 12 40.9 | F G | 10.8 | 17 | Cylindrical tower, orange daymark with black vertical stripe. 5.9 | Emergency light. Visible in line of range. Operates 24 h. Year round. |
| 2278.6 H2451.1 | | 002°24' 713.8 m from front. | F G | 33.7 | 17 | Trapezoidal skeleton tower, orange daymark with black vertical stripe. 22.3 | Emergency light. Visible in line of range. Operates 24 h. Year round. Synthetic AIS MMSI: 993161067 Chart:1311 Edn 10/25 (Q25-073, 074) |

Notices to Mariners – Monthly Eastern Edition
Section 5: List of Lights, Buoys and Fog Signals Corrections

| No. | Name | Position ----- Latitude N. Longitude W. | Light Characteristics | Focal Height in m. above water | Nomi- nal Range | Description ----- Height in meters above ground | Remarks ----- Fog Signals |
|-----------------|---|--|--------------------------|--|-----------------------|---|---|
| 2282 H2452 | Route de l'île Saint-Ours upstream range | Off shore. 45 53 05.4 073 12 57.9 | F G | 17.1 | 13 | Trapezoidal skeleton tower, orange slatwork daymark with black vertical stripe. 13.2 | Visible in line of range. Operates 24 h. Emergency mode. Year round. |
| 2283 H2452.1 | | 182°22' 670.3 m from front. | F G | 33.0 | 13 | Square skeleton tower, orange slatwork daymark with black vertical stripe. 18.6 | Visible in line of range. Operates 24 h. Emergency mode. Year round. |
| 2283.1 | | | F G | 32.7 | 5 | Square skeleton tower. 18.3 | Visible from 066°20' through E. to 112°23'. Emergency mode. |
| 2286.7 H2453 | Île Saint-Ours South Light Racon - - (M) X & S Bands | 45 54 20.5 073 13 31.5 | Iso Y 2s | 15.1 | 5 | Square skeleton tower. 6.5 | Operates at night only. Year round. |
| | | | | | | | Chart:1311 Edn 10/25 (Q25-075, 076) |
| | | | | | | | Chart:1311 Edn 10/25 |

INLAND WATERS

LAKE ONTARIO (LL 403.4 – 551)

| | | | | | | | |
|-------|---|--|---------|-------|-------|---------------------------|-----------------------------------|
| 457 | East Entrance light spar buoy Q22 | N. side of E. entrance. 44 09 58.2 077 06 11.5 | Fl R 4s | | | Red spar, marked "Q22". | Seasonal (in place year round). |
| | | | | | | | Chart:2019 Edn 10/25 (B25-038) |
| 458.1 | Telegraph Narrows light buoy Q31 | 44 09 51.2 077 07 10.0 | Fl G 4s | | | Green spar, marked "Q31". | Seasonal (in place year round). |
| | | | | | | | Chart:2019 Edn 10/25 (B25-032) |
| 458.2 | Telegraph Narrows light buoy Q32 | 44 09 53.2 077 07 10.0 | Fl R 4s | | | Red spar, marked "Q32". | Seasonal (in place year round). |
| | | | | | | | Chart:2019 Edn 10/25 (B25-033) |
| 458.3 | Telegraph Narrows light buoy Q34 | 44 09 51.7 077 07 17.5 | Fl R 4s | | | Red spar, marked "Q34". | Seasonal (in place year round). |
| | | | | | | | Chart:2019 Edn 10/25 (B25-034) |
| 458.4 | Telegraph Narrows light buoy Q35 | N. of island. 44 09 50.2 077 07 18.0 | Fl G 4s | | | Green spar, marked "Q35". | Seasonal (in place year round). |
| | | | | | | | Chart:2019 Edn 10/25 (B25-035) |
| 458.5 | Telegraph Narrows light buoy Q37 | 44 09 49.2 077 07 26.0 | Q G 1s | | | Green spar, marked "Q37". | Seasonal (in place year round). |
| | | | | | | | Chart:2019 Edn 10/25 (B25-036) |
| 462 | West Entrance light spar buoy Q40 | W. end of Telegraph Narrows. 44 09 48.2 077 07 35.0 | Fl R 4s | | | Red spar, marked "Q40". | Seasonal (in place year round). |
| | | | | | | | Chart:2019 Edn 10/25 (B25-037) |

Notices to Mariners – Monthly Eastern Edition
Section 5: List of Lights, Buoys and Fog Signals Corrections

| No. | Name | Position ----- Latitude N. Longitude W. | Light Characteristics | Focal Height in m. above water | Nomi- nal Range | Description ----- Height in meters above ground | Remarks ----- Fog Signals |
|-------|---|--|--------------------------|--|-----------------------|--|--|
| 462.5 | Sucker Creek light spar buoy Q42 | S. entrance to creek. 44 09 28.2 077 08 31.0 | Fl R 4s | | | Red spar, marked "Q42". | Seasonal (in place year round). Chart:2019 Edn 10/25 (B25-039) |
| 463 | North Port Shoal light spar buoy Q43 | On N. edge of shoal. 44 08 57.3 077 11 39.5 | Fl G 4s | | | Green spar, marked "Q43". | Seasonal (in place year round). Chart:2019 Edn 10/25 (B25-041) |
| 464 | Trident Point light spar buoy Q46 | 44 08 53.0 077 13 36.0 | Fl R 4s | | | Red spar, marked "Q46". | Seasonal (in place year round). Chart:2019 Edn 10/25 (B25-040) |

LAKE SUPERIOR (LL 1082 – 1161)

| | | | | | | | |
|------|------------------|---|---------|------|---|---|--|
| 1087 | Coppermine Point | On extremity of point. 46 59 02.2 084 47 14.0 | Fl W 4s | 14.4 | 5 | Cylindrical mast, red and white rectangular daymark. 5.5 | Seasonal. Chart:2307 Edn 10/25 (D25-024) |
|------|------------------|---|---------|------|---|---|--|

LAKE WINNIPEG (LL 1563.1 – 1625)

| | | | | | | | |
|--------|--------------------|---|---------|-----|---|--|--|
| 1583.1 | Gull Harbour Wharf | On outer end of wharf. 51 11 50.0 096 37 02.0 | Fl R 4s | 7.0 | 8 | Square skeleton tower , red and white rectangular daymark. 6.1 | Seasonal. Chart:6249 Edn 10/25 (P25-057) |
|--------|--------------------|---|---------|-----|---|--|--|